

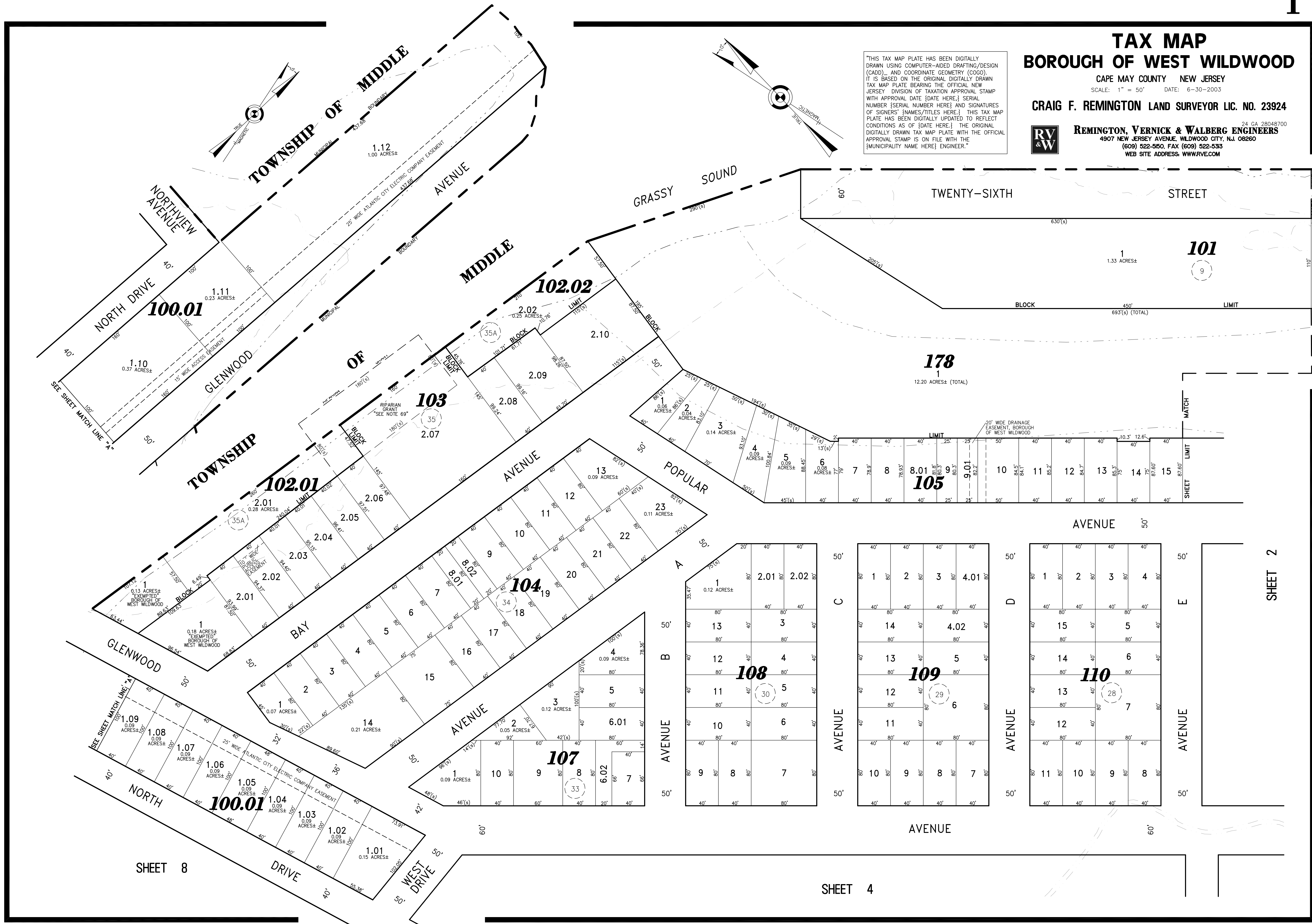
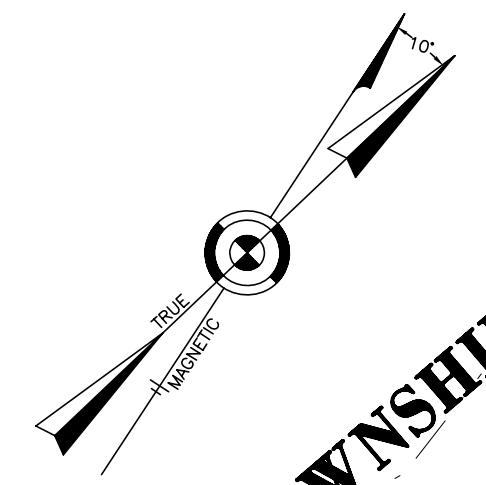
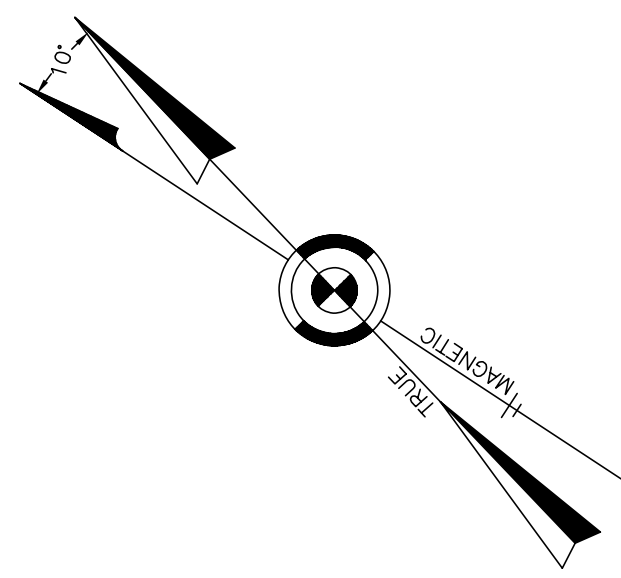
TAX MAP BOROUGH OF WEST WILDWOOD

CAPE MAY COUNTY NEW JERSEY
SCALE: 1" = 50' DATE: 6-30-2003

CRAIG F. REMINGTON LAND SURVEYOR LIC. NO. 23924

RV & W
REMINGTON, VERNICK & WALBERG ENGINEERS
4907 NEW JERSEY AVENUE, WILDWOOD CITY, N.J. 08260
(609) 522-5150, FAX (609) 522-5335
WEB SITE ADDRESS: WWW.RVE.COM

"THIS TAX MAP PLATE HAS BEEN DIGITALLY DRAWN USING COMPUTER-AIDED DRAFTING/DESIGN (CADD) AND COORDINATE GEOMETRY (COGO). IT IS BASED ON THE ORIGINAL DIGITALLY DRAWN TAX MAP PLATE BEARING THE OFFICIAL NEW JERSEY DIVISION OF TAXATION APPROVAL STAMP WITH APPROVAL DATE {DATE HERE}, SERIAL NUMBER {SERIAL NUMBER HERE} AND SIGNATURES OF SIGNERS' {NAMES/TITLES HERE}. THIS TAX MAP PLATE HAS BEEN DIGITALLY UPDATED TO REFLECT CONDITIONS AS OF {DATE HERE}. THE ORIGINAL DIGITALLY DRAWN TAX MAP PLATE WITH THE OFFICIAL APPROVAL STAMP IS ON FILE WITH THE {MUNICIPALITY NAME HERE} ENGINEER."



SHEET 8

SHEET 4

SHEET 2