
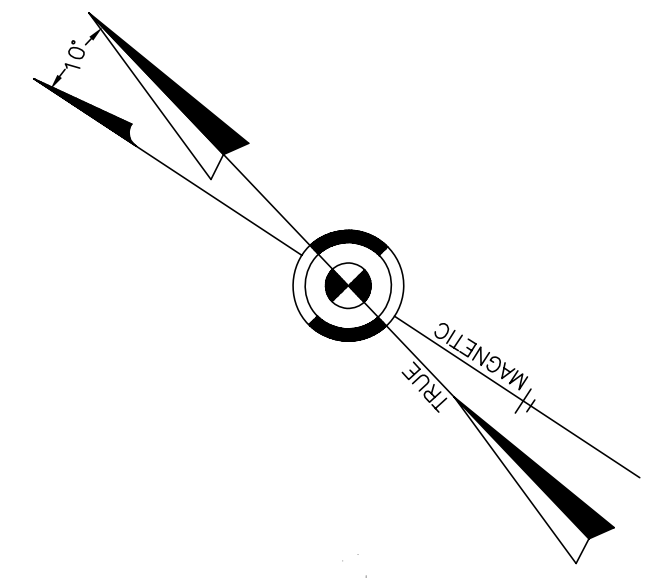


TAX MAP
BOROUGH OF WEST WILDWOOD
 CAPE MAY COUNTY NEW JERSEY
 SCALE: 1" = 50' DATE: 6-30-2003
CRAIG F. REMINGTON LAND SURVEYOR LIC. NO. 23924
 **REMINGTON, VERNICK & WALBERG ENGINEERS**
 4907 NEW JERSEY AVENUE, WILDWOOD CITY, N.J. 08260
 (609) 522-5950, FAX (609) 522-5333
 WEB SITE ADDRESS: WWW.RVW.COM

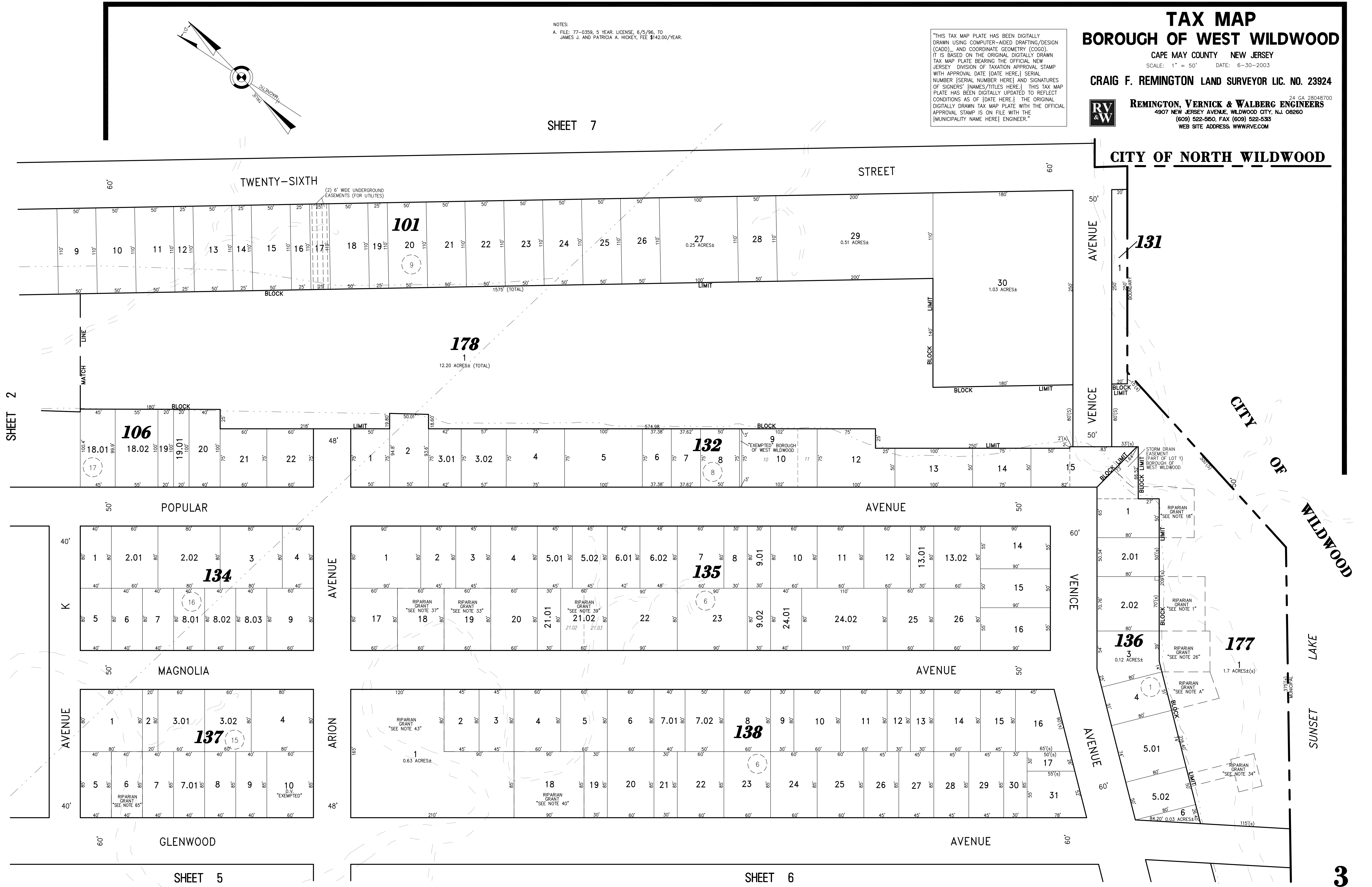
THIS TAX MAP PLATE HAS BEEN DIGITALLY DRAWN USING COMPUTER-AIDED DRAFTING/DESIGN (CADD) AND COORDINATE GEOMETRY (COGO). IT IS BASED ON THE ORIGINAL DIGITALLY DRAWN TAX MAP PLATE BEARING THE OFFICIAL NEW JERSEY DIVISION OF TAXATION APPROVAL STAMP WITH APPROVAL DATE {DATE HERE}, SERIAL NUMBER {SERIAL NUMBER HERE} AND SIGNATURES OF SIGNERS' {NAMES/TITLES HERE}. THIS TAX MAP PLATE HAS BEEN DIGITALLY UPDATED TO REFLECT CONDITIONS AS OF {DATE HERE}. THE ORIGINAL DIGITALLY DRAWN TAX MAP PLATE WITH THE OFFICIAL APPROVAL STAMP IS ON FILE WITH THE {MUNICIPALITY NAME HERE} ENGINEER.

NOTES:
 A. FILE: 77-0359, 5 YEAR LICENSE, 6/5/96, TO JAMES J. AND PATRICIA A. HICKEY, FEE \$142.00/YEAR.



SHEET 7

SHEET 2



SHEET 5

SHEET 6