

SHEET 1

SHEET 2

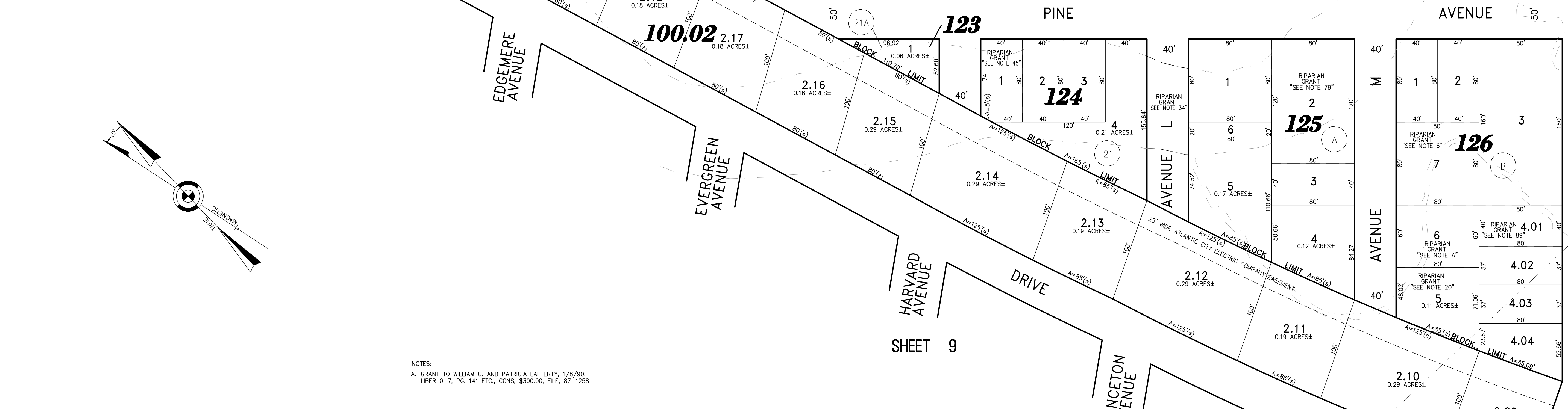
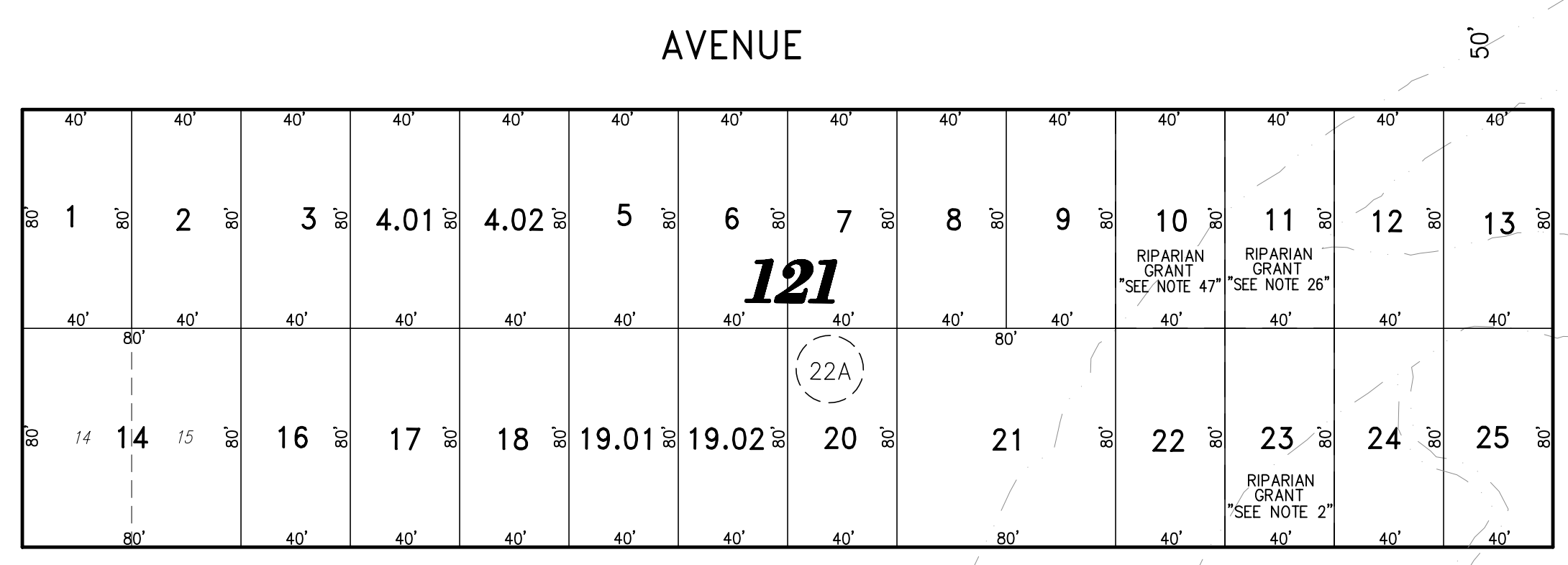
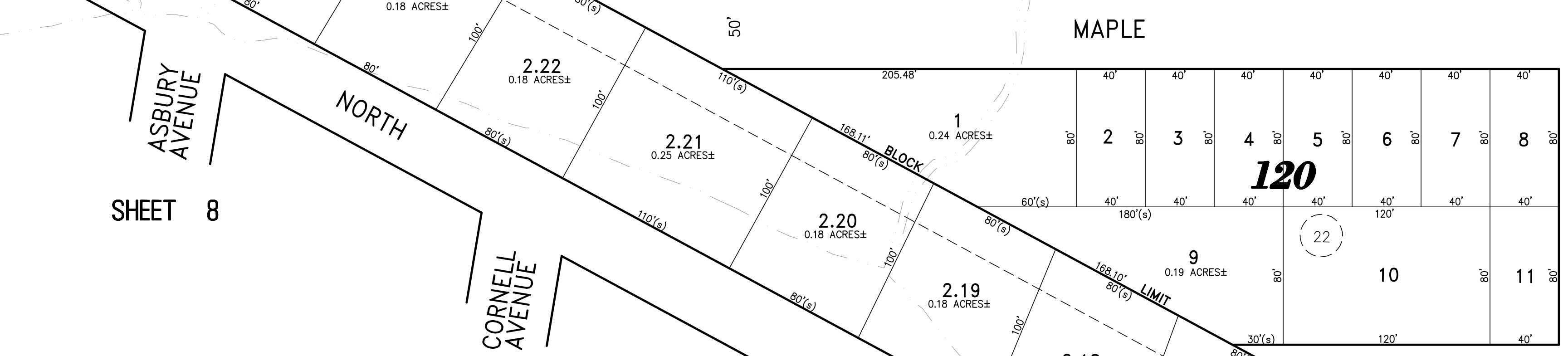
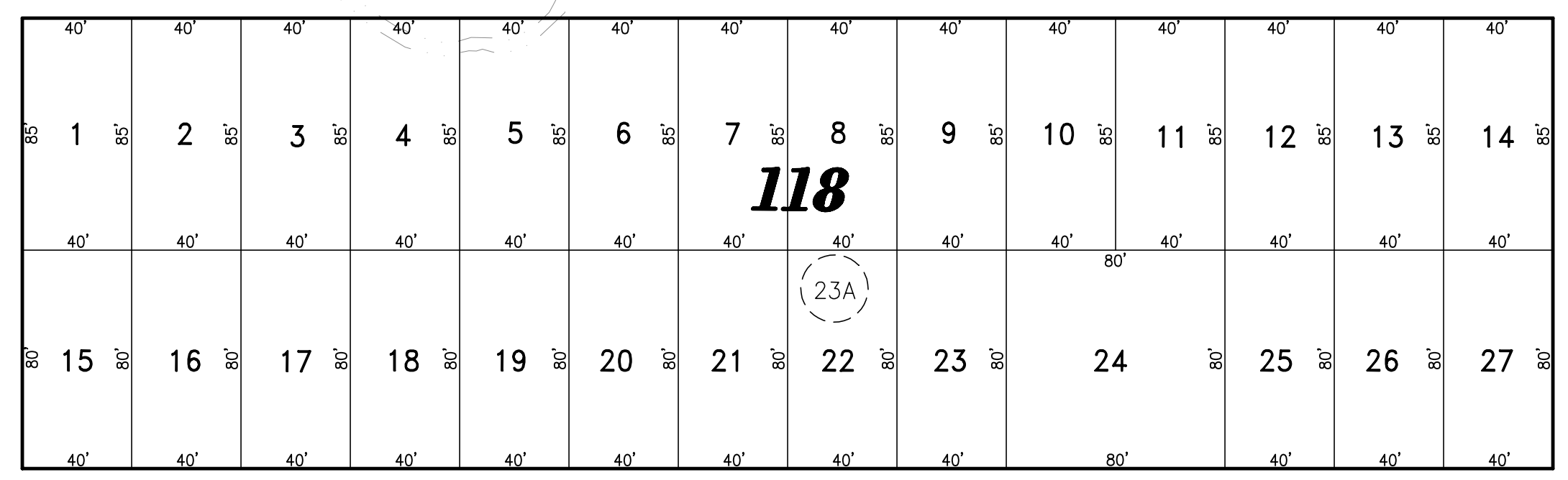
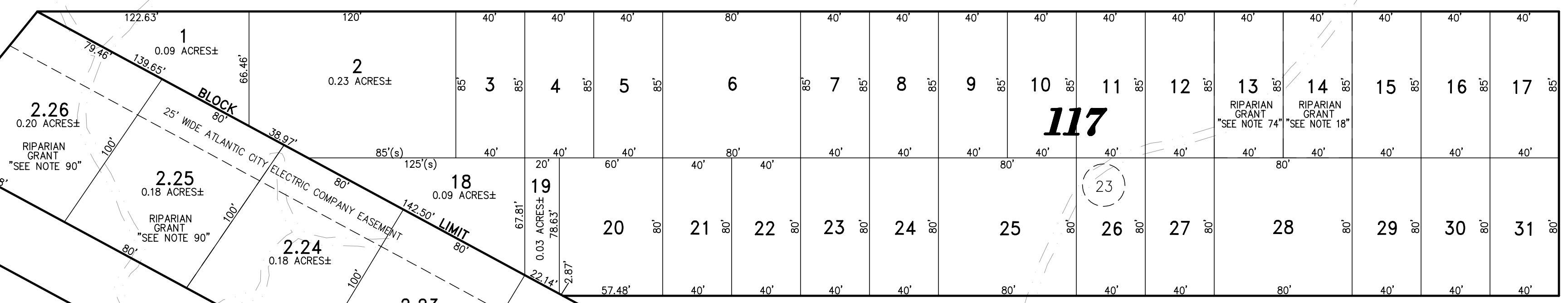
SHEET 8

SHEET 9

SHEET 5

SHEET 1 AVENUE B AVENUE C AVENUE D AVENUE F AVENUE G

GLENWOOD AVENUE



TAX MAP BOROUGH OF WEST WILDWOOD

CAPE MAY COUNTY NEW JERSEY SCALE: 1" = 50' DATE: 6-30-2003 CRAIG F. REMINGTON LAND SURVEYOR LIC. NO. 23924

REMINGTON, VERNICK & WALBERG ENGINEERS 4907 NEW JERSEY AVENUE, WILDWOOD CITY, N.J. 08260 (609) 522-5180, FAX (609) 522-5313 WEB SITE ADDRESS: WWW.RVW.COM

"THIS TAX MAP PLATE HAS BEEN DIGITALLY DRAWN USING COMPUTER-AIDED DRAFTING/DESIGN (CADD)... AND COORDINATE GEOMETRY (COGO). IT IS BASED ON THE ORIGINAL DIGITALLY DRAWN TAX MAP PLATE BEARING THE OFFICIAL NEW JERSEY DIVISION OF TAXATION APPROVAL STAMP WITH APPROVAL DATE [DATE HERE], SERIAL NUMBER [SERIAL NUMBER HERE] AND SIGNATURES OF SIGNERS' [NAMES/TITLES HERE]. THIS TAX MAP PLATE HAS BEEN DIGITALLY UPDATED TO REFLECT CONDITIONS AS OF [DATE HERE]. THE ORIGINAL DIGITALLY DRAWN TAX MAP PLATE WITH THE OFFICIAL APPROVAL STAMP IS ON FILE WITH THE [MUNICIPALITY NAME HERE] ENGINEER."

