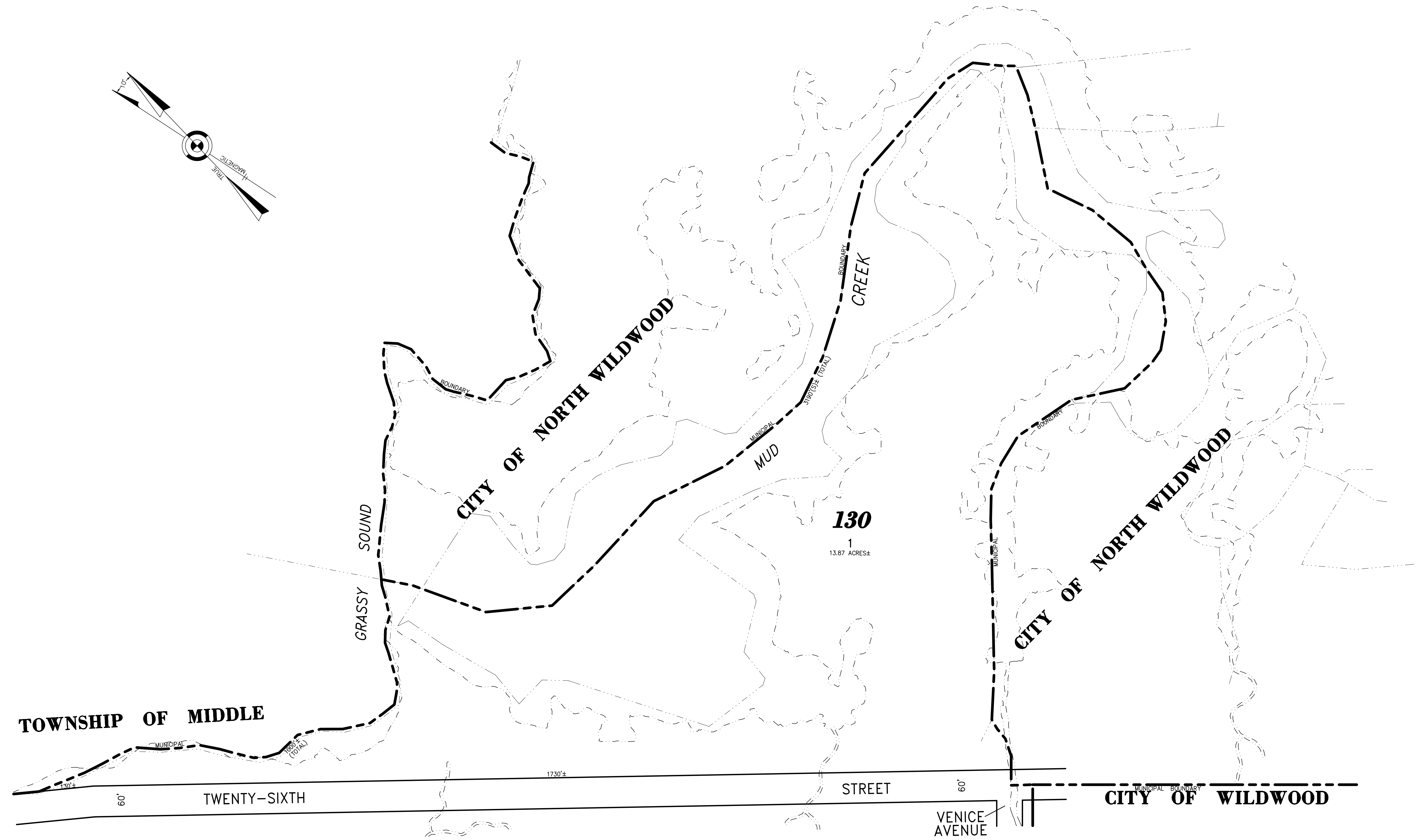
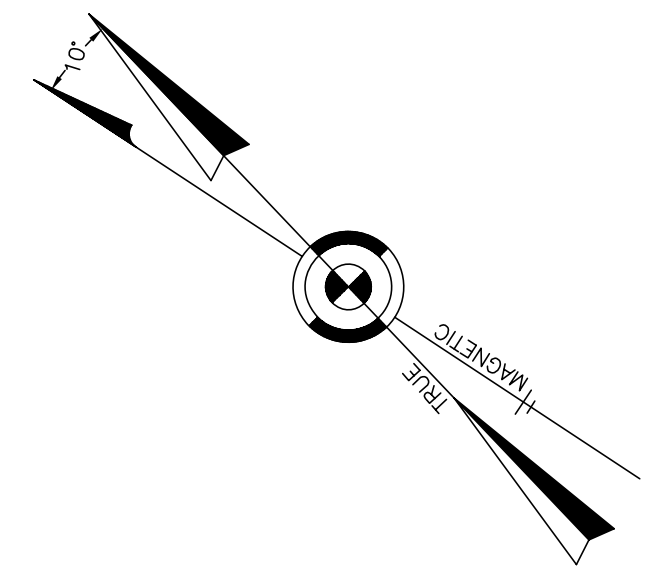


NOTE:
THIS SHEET HAS BEEN DRAWN USING COMPUTER AIDED DRAFTING/DESIGN
(CADD) AND COORDINATE GEOMETRY (GOGO).



SHEET 2

SHEET 3

"THIS TAX MAP PLATE HAS BEEN DIGITALLY DRAWN USING COMPUTER-AIDED DRAFTING/DESIGN (CADD) AND COORDINATE GEOMETRY (GOGO). IT IS BASED ON THE ORIGINAL DIGITALLY DRAWN TAX MAP PLATE BEARING THE OFFICIAL NEW JERSEY DIVISION OF TAXATION APPROVAL STAMP WITH APPROVAL DATE {DATE HERE,} SERIAL NUMBER {SERIAL NUMBER HERE} AND SIGNATURES OF SIGNERS' {NAMES/TITLES HERE}. THIS TAX MAP PLATE HAS BEEN DIGITALLY UPDATED TO REFLECT CONDITIONS AS OF {DATE HERE,} THE ORIGINAL DIGITALLY DRAWN TAX MAP PLATE WITH THE OFFICIAL APPROVAL STAMP IS ON FILE WITH THE {MUNICIPALITY NAME HERE} ENGINEER."

TAX MAP BOROUGH OF WEST WILDWOOD

CAPE MAY COUNTY NEW JERSEY
SCALE: 1" = 100' DATE: 6-30-2003
CRAIG F. REMINGTON LAND SURVEYOR LIC. NO. 23924

RV & W
REMINGTON, VERNICK & WALBERG ENGINEERS
4907 NEW JERSEY AVENUE, WILDWOOD CITY, N.J. 08260
(609) 522-5150, FAX (609) 522-5333
WEB SITE ADDRESS: WWW.RVW.COM