

TAX MAP BOROUGH OF WEST WILDWOOD

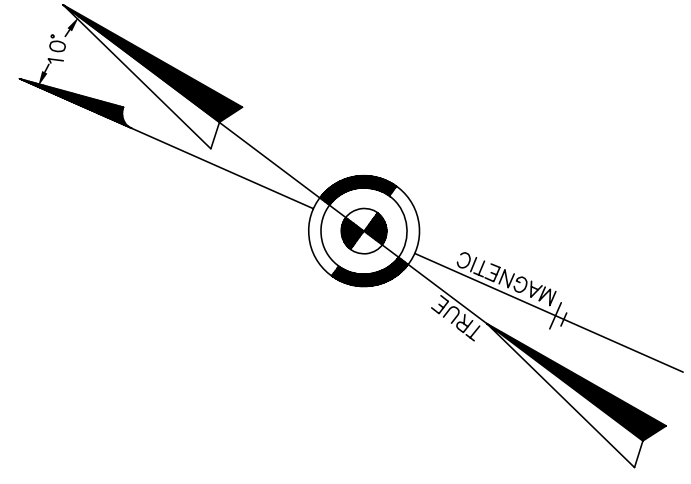
CAPE MAY COUNTY NEW JERSEY
SCALE: 1" = 50' DATE: 6-30-2003

CRAIG F. REMINGTON LAND SURVEYOR LIC. NO. 23924



REMINGTON, VERNICK & WALBERG ENGINEERS
4907 NEW JERSEY AVENUE, WILDWOOD CITY, N.J. 08260
(609) 522-550, FAX (609) 522-533
WEB SITE ADDRESS: WWW.RVE.COM

"THIS TAX MAP PLATE HAS BEEN DIGITALLY DRAWN USING COMPUTER-AIDED DRAFTING/DESIGN (CADD) AND COORDINATE GEOMETRY (COGO). IT IS BASED ON THE ORIGINAL DIGITALLY DRAWN TAX MAP PLATE BEARING THE OFFICIAL NEW JERSEY DIVISION OF TAXATION APPROVAL STAMP WITH APPROVAL DATE [DATE HERE], SERIAL NUMBER [SERIAL NUMBER HERE] AND SIGNATURES OF SIGNERS' [NAMES/TITLES HERE]. THIS TAX MAP PLATE HAS BEEN DIGITALLY UPDATED TO REFLECT CONDITIONS AS OF [DATE HERE]. THE ORIGINAL DIGITALLY DRAWN TAX MAP PLATE WITH THE OFFICIAL APPROVAL STAMP IS ON FILE WITH THE [MUNICIPALITY NAME HERE] ENGINEER."

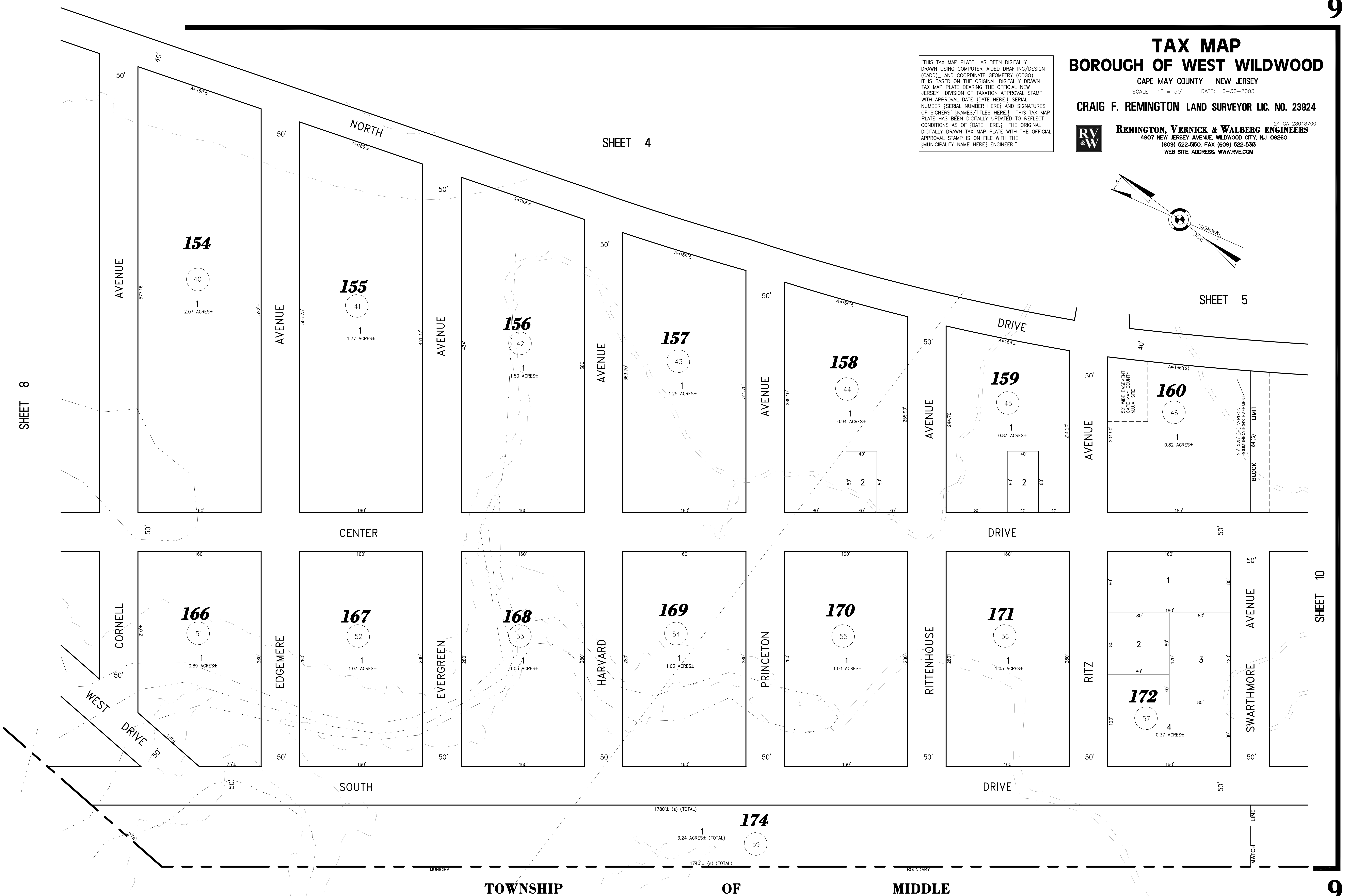


SHEET 4

SHEET 5

SHEET 8

SHEET 10



TOWNSHIP OF MIDDLE