

REVISIONS		
DATE	NAME	NO.

NOTE:
THIS SHEET HAS BEEN DRAWN USING COMPUTER AIDED DRAFTING/DESIGN (CAD/D) AND COORDINATE GEOMETRY (COGO).

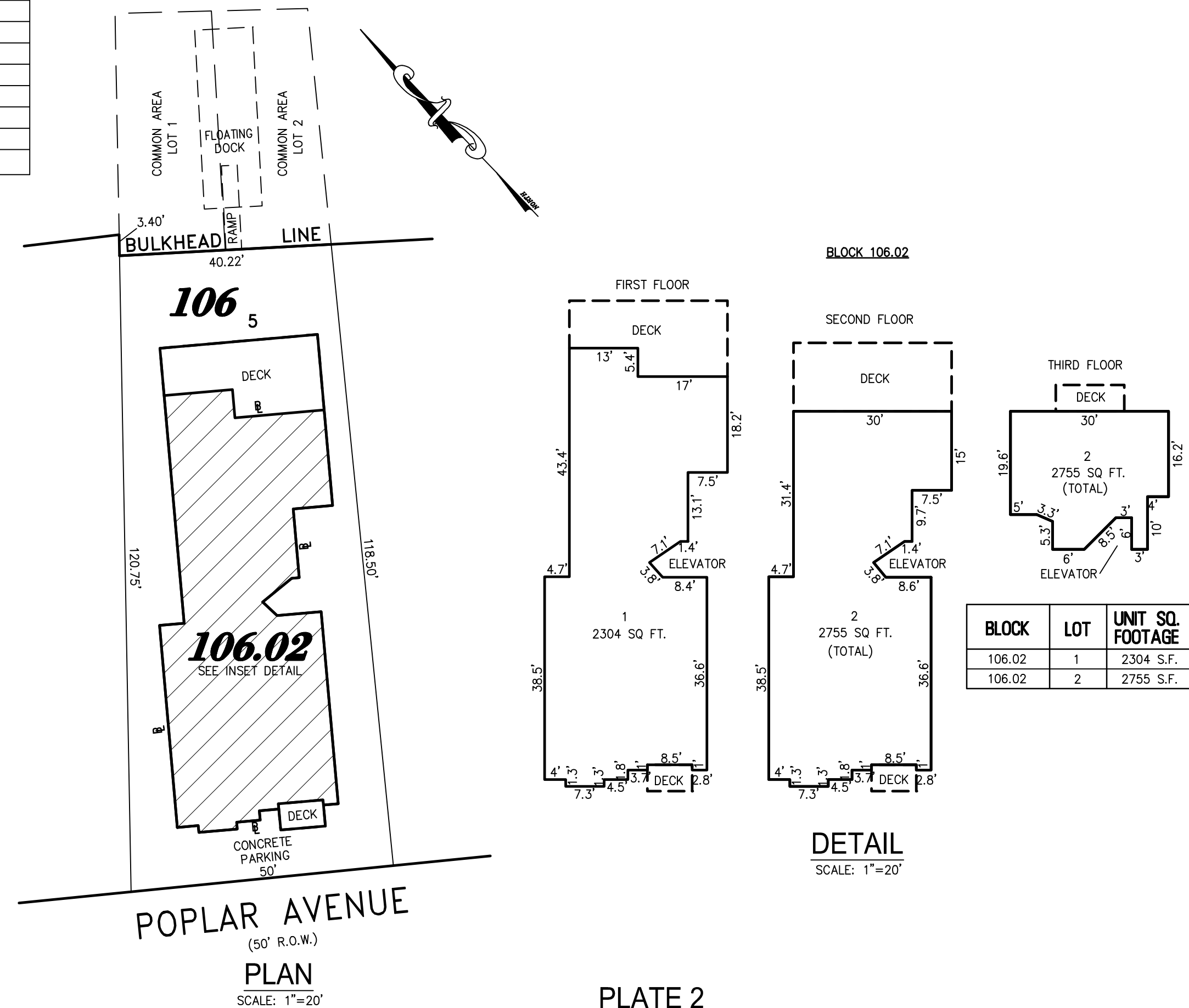


PLATE 2
BLOCK 106, LOT 5
647 WEST POPLAR AVENUE CONDOMINIUM
INSET "A"

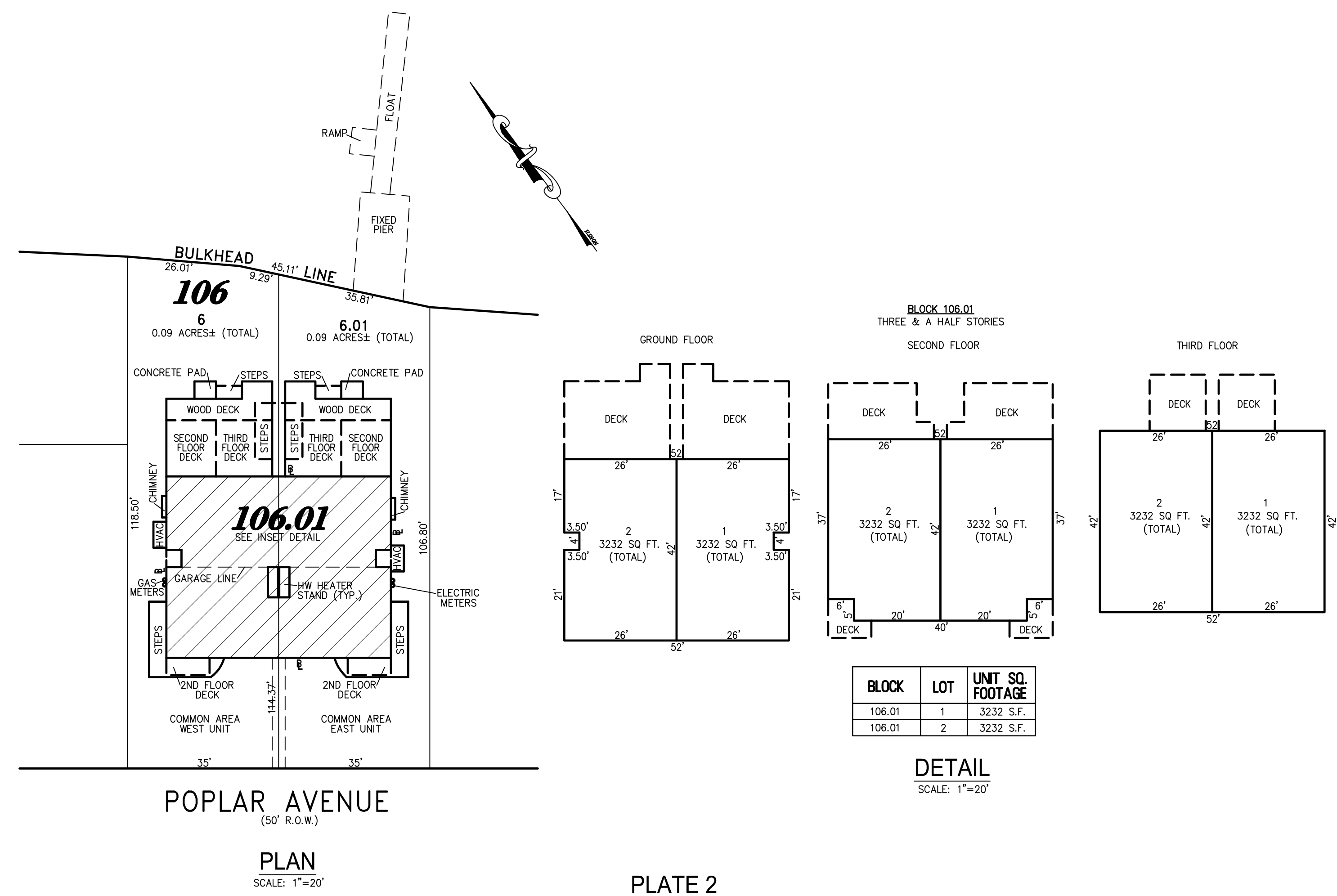


PLATE 2
BLOCK 106, LOTS 6 & 6.01
645 WEST POPLAR AVENUE CONDOMINIUM
INSET "B"

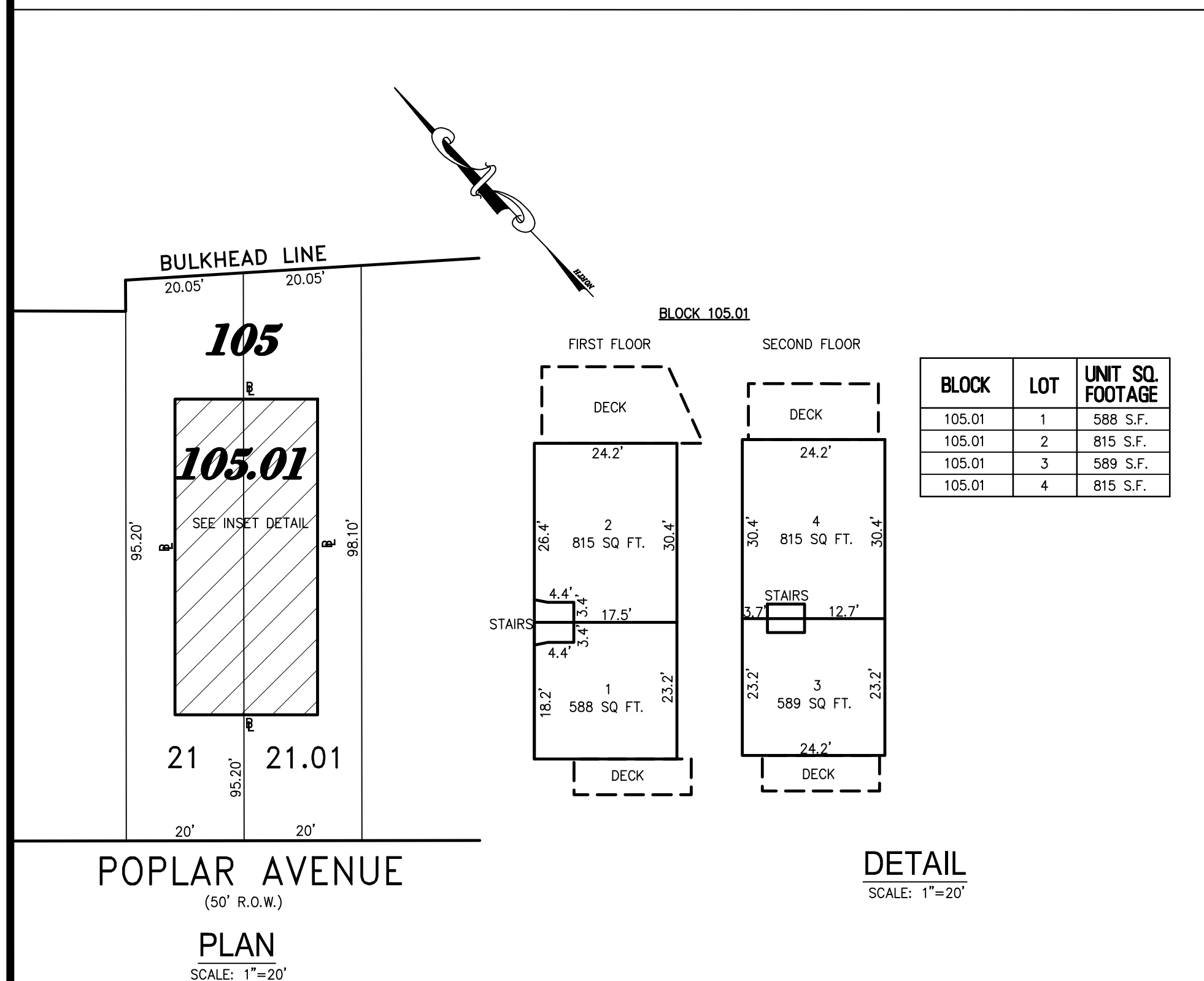


PLATE 2
BLOCK 105, LOTS 21 & 21.01
717 WEST POPLAR AVENUE CONDOMINIUM
INSET "C"

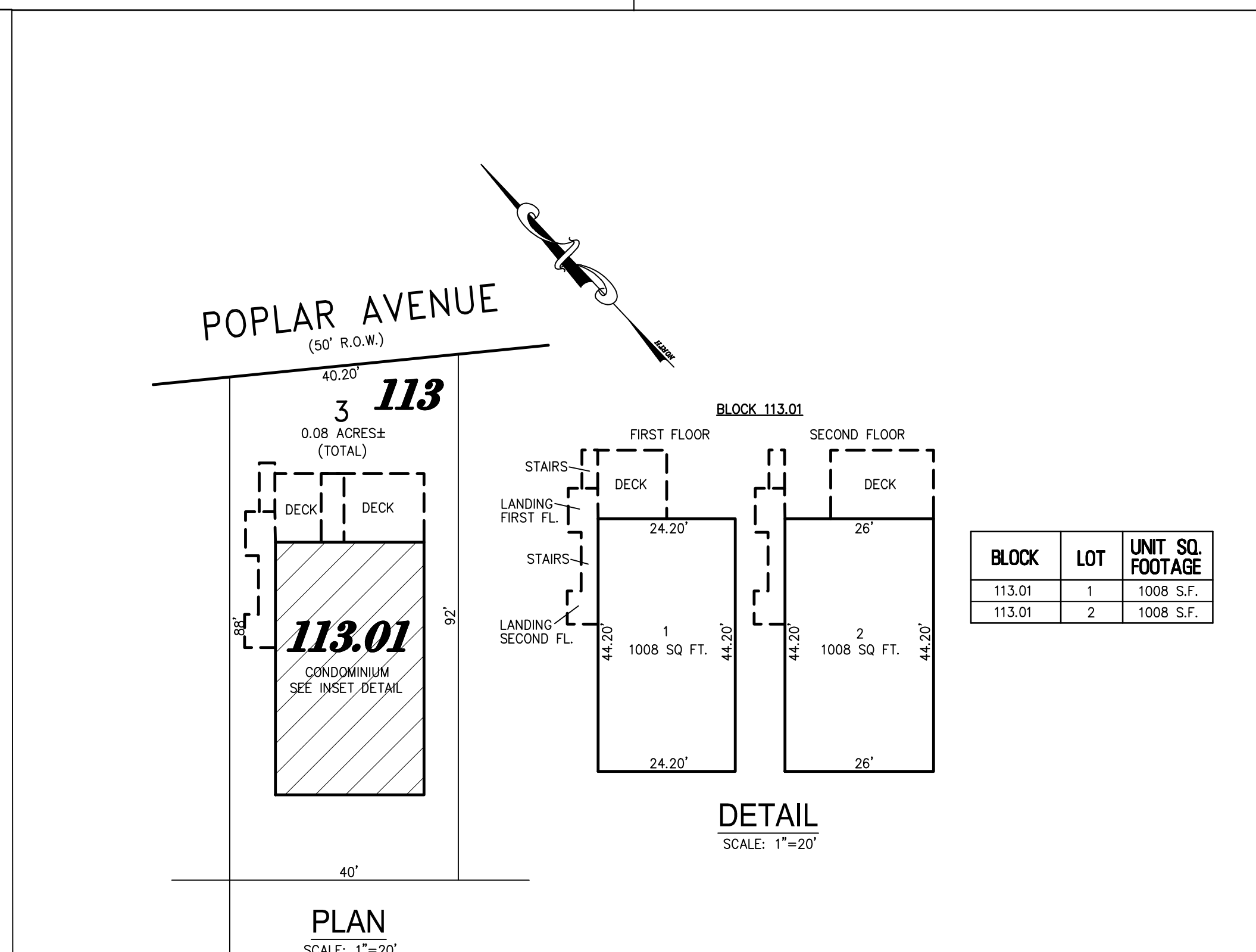


PLATE 2
BLOCK 113, LOT 3
702 WEST POPLAR AVENUE CONDOMINIUM
INSET "D"

TAX MAP
BOROUGH OF WEST WILDWOOD
CAPE MAY COUNTY NEW JERSEY
SCALE: AS NOTED DATE: 6-30-2003
CHARLES E. ADAMSON NJ PROFESSIONAL LAND SURVEYOR LIC. NO. 42627
24 GA 28048700
RV & W REMINGTON, VERNICK & WALBERG ENGINEERS
4907 NEW JERSEY AVENUE, WILDWOOD CITY, N.J. 08260
(609) 522-5150, FAX (609) 522-5313
WEB SITE ADDRESS: WWW.RVE.COM
TO SHOW CONDITIONS AS OF 12-2-2001