

REVISIONS		
DATE	NAME	NO.

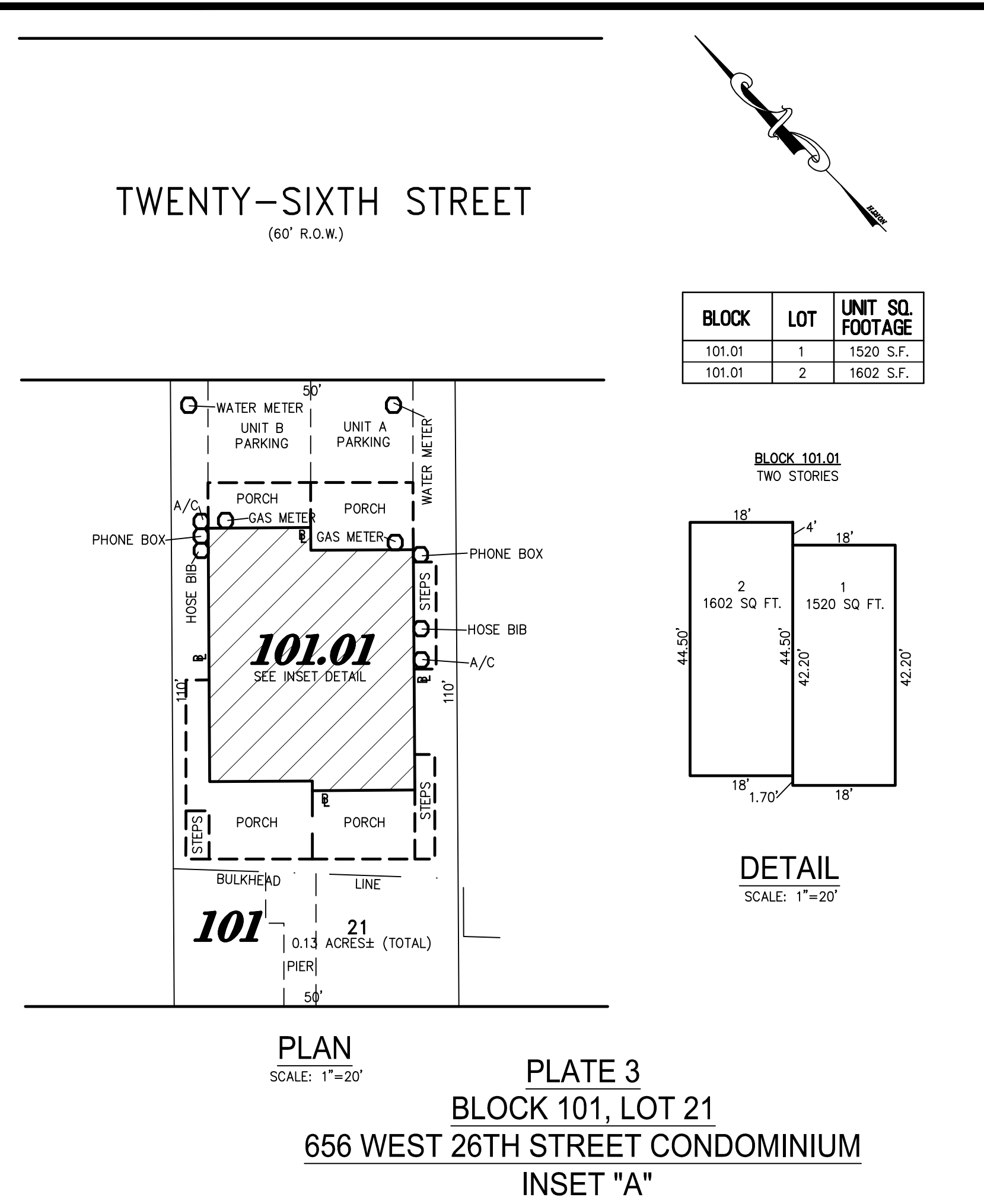


PLATE 3  
BLOCK 101, LOT 21  
656 WEST 26TH STREET CONDOMINIUM  
INSET "A"

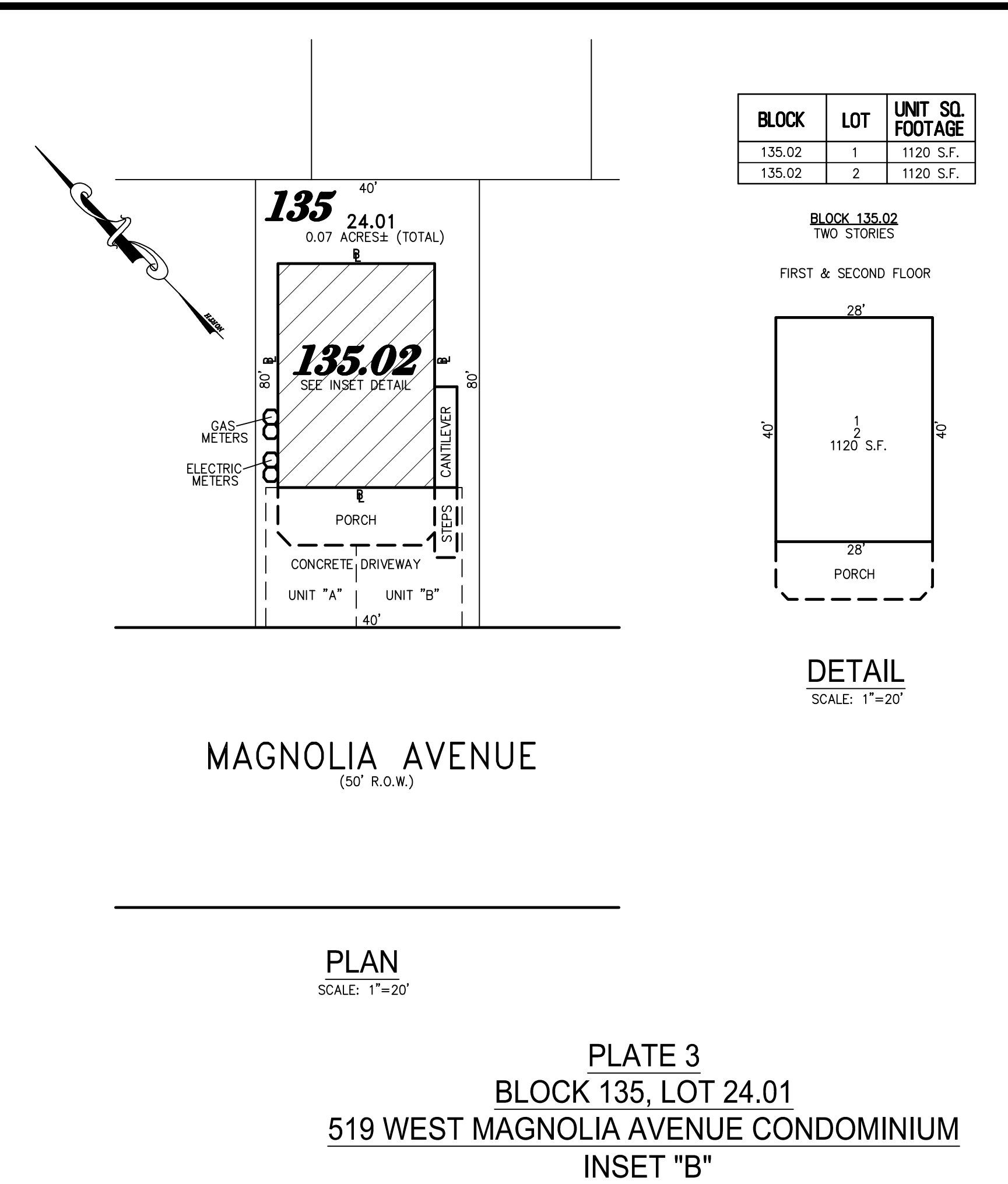


PLATE 3  
BLOCK 135, LOT 24.01  
519 WEST MAGNOLIA AVENUE CONDOMINIUM  
INSET "B"

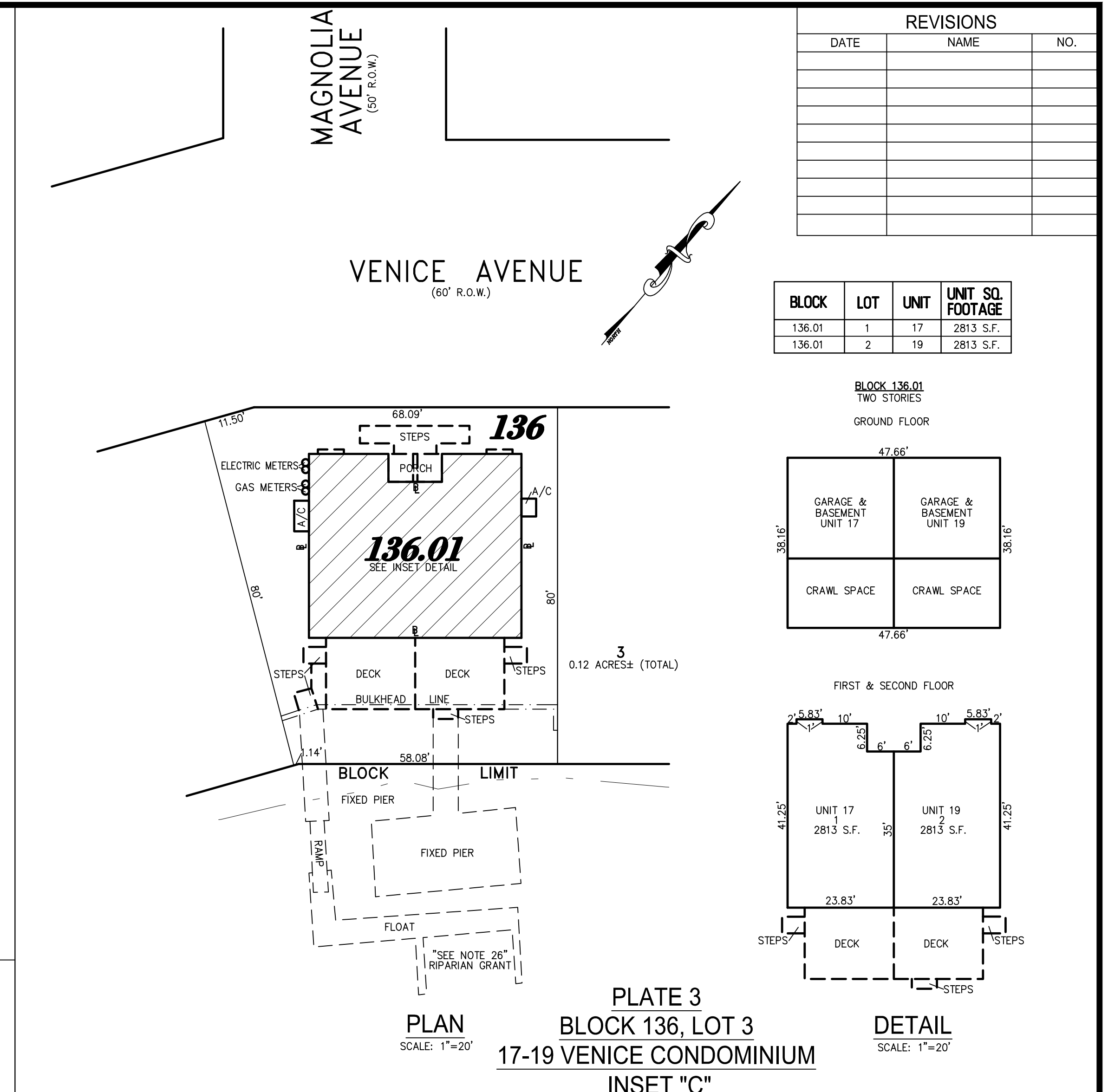


PLATE 3  
BLOCK 136, LOT 3  
17-19 VENICE CONDOMINIUM  
INSET "C"

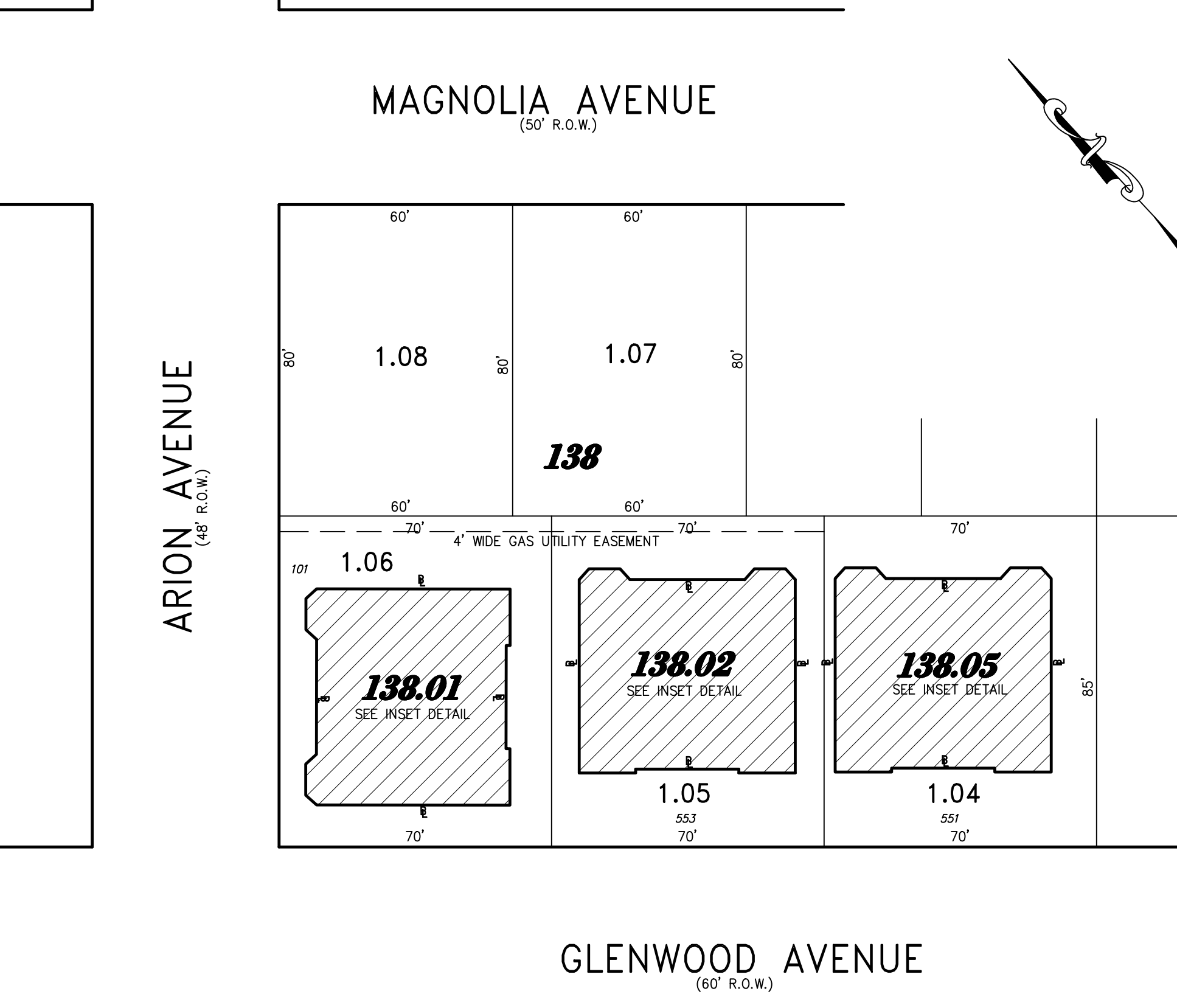
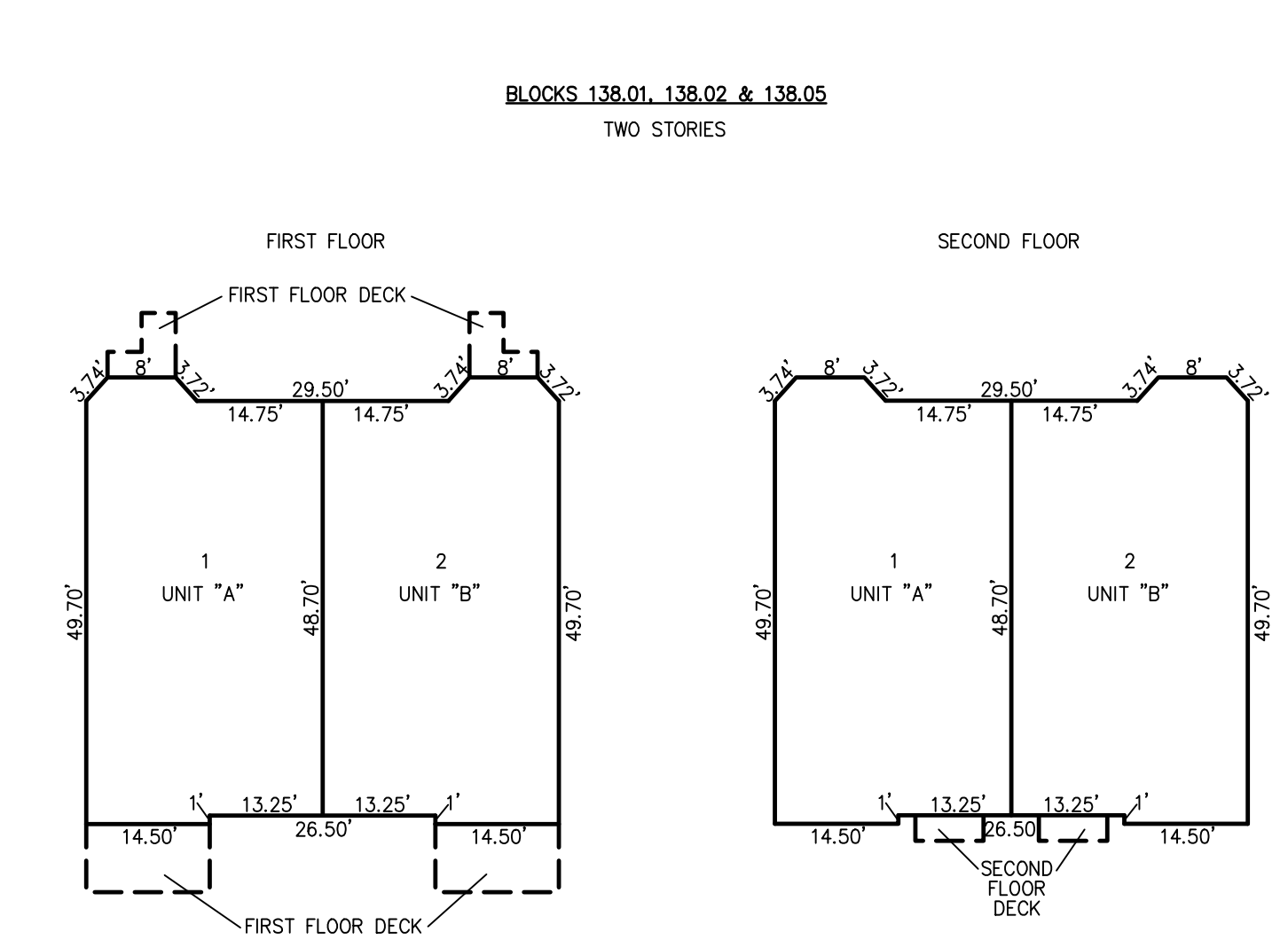


PLATE 3  
BLOCK 138, LOTS 1.04, 1.05, 1.06  
551 & 553 WEST GLENWOOD & 101 ARION AVENUE CONDOMINIUMS  
INSET "D"



NOTE: DIMENSIONS ARE TYPICAL FOR ALL SIMILAR BUILDINGS AND UNITS.

BLOCK	LOT	UNIT	UNIT SQ. FOOTAGE
138.01	1	A	2450 S.F.
138.01	2	B	2450 S.F.
138.02	1	A	2448 S.F.
138.02	2	B	2448 S.F.
138.05	1	A	2650 S.F.
138.05	2	B	2650 S.F.

PLAN  
SCALE: 1"=30'

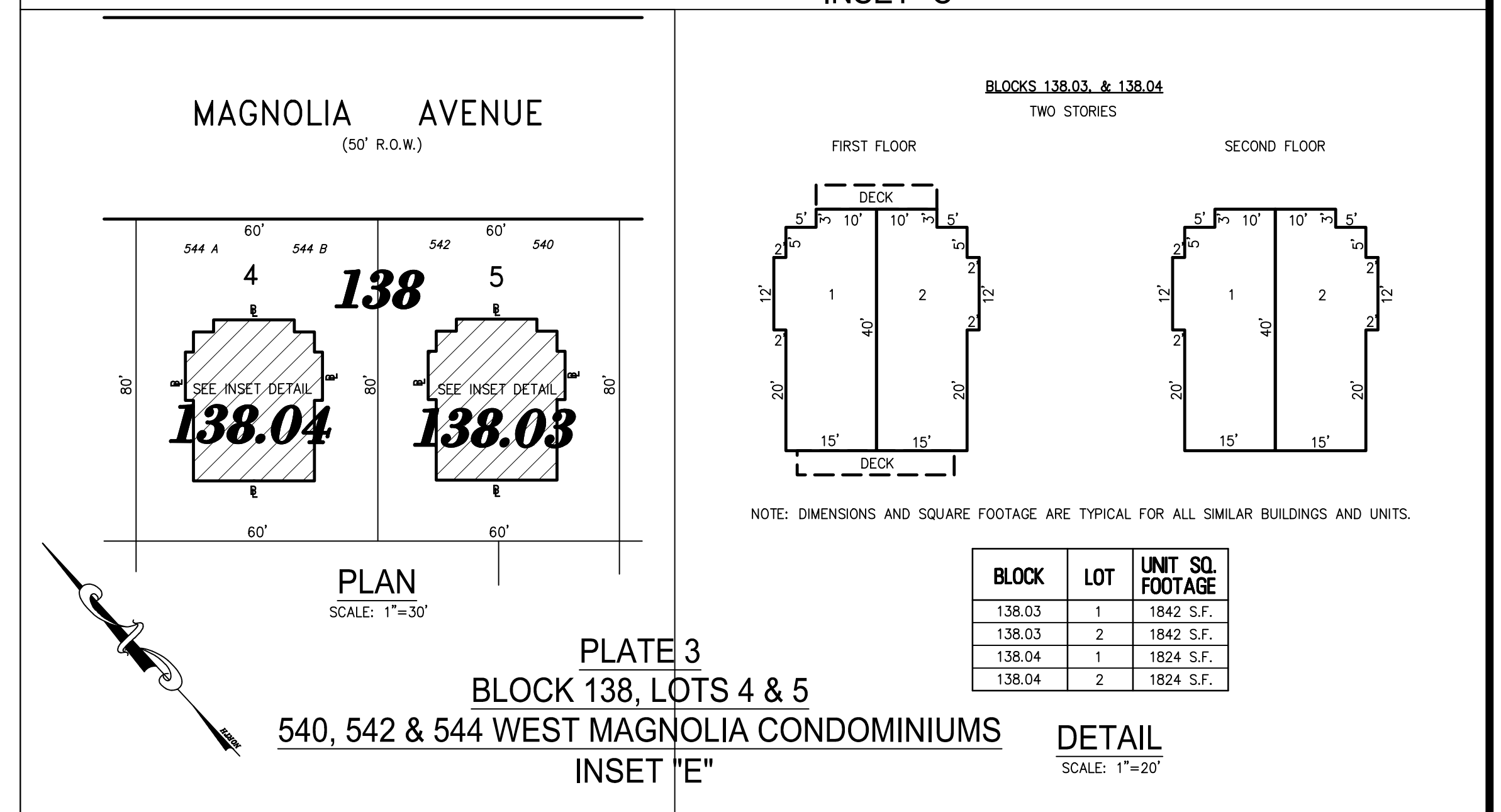


PLATE 3  
BLOCK 138, LOTS 4 & 5  
540, 542 & 544 WEST MAGNOLIA CONDOMINIUMS  
INSET "E"

BLOCK	LOT	UNIT	UNIT SQ. FOOTAGE
138.03	1	1	1842 S.F.
138.03	2	2	1842 S.F.
138.04	1	1	1824 S.F.
138.04	2	2	1824 S.F.

DETAIL  
SCALE: 1"=20'

**TAX MAP**  
**BOROUGH OF WEST WILDWOOD**  
CAPE MAY COUNTY NEW JERSEY  
SCALE: AS NOTED DATE: 6-30-2003  
CHARLES E. ADAMSON NJ PROFESSIONAL LAND SURVEYOR LIC. NO. 42627  
24 GA 28048700  
**RVW** REMINGTON, VERNICK & WALBERG ENGINEERS  
4907 NEW JERSEY AVENUE, WILDWOOD CITY, N.J. 08260  
(609) 522-5150, FAX (609) 522-5313  
WEB SITE ADDRESS: WWW.RVE.COM  
TO SHOW CONDITIONS AS OF 12-2-2001

NOTE:  
THIS SHEET HAS BEEN DRAWN USING COMPUTER AIDED DRAFTING/DESIGN (CAD/D) AND COORDINATE GEOMETRY (COGO).