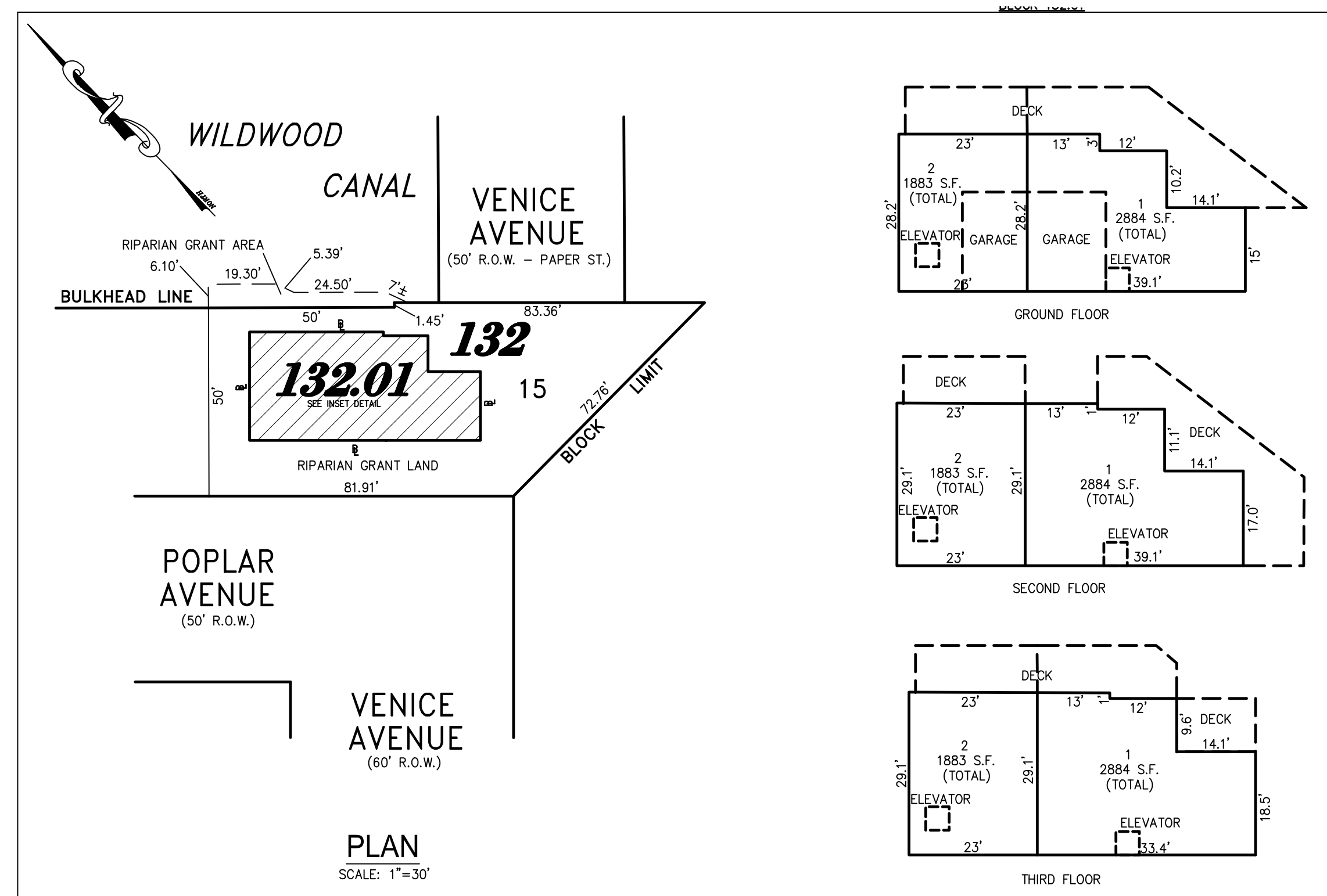


NOTE:
THIS SHEET HAS BEEN DRAWN USING COMPUTER AIDED DRAFTING/DESIGN (CAD/D) AND COORDINATE GEOMETRY (COGO).

REVISIONS		
DATE	NAME	NO.
2-18-2018	CHARLES E. ADAMSON	42627

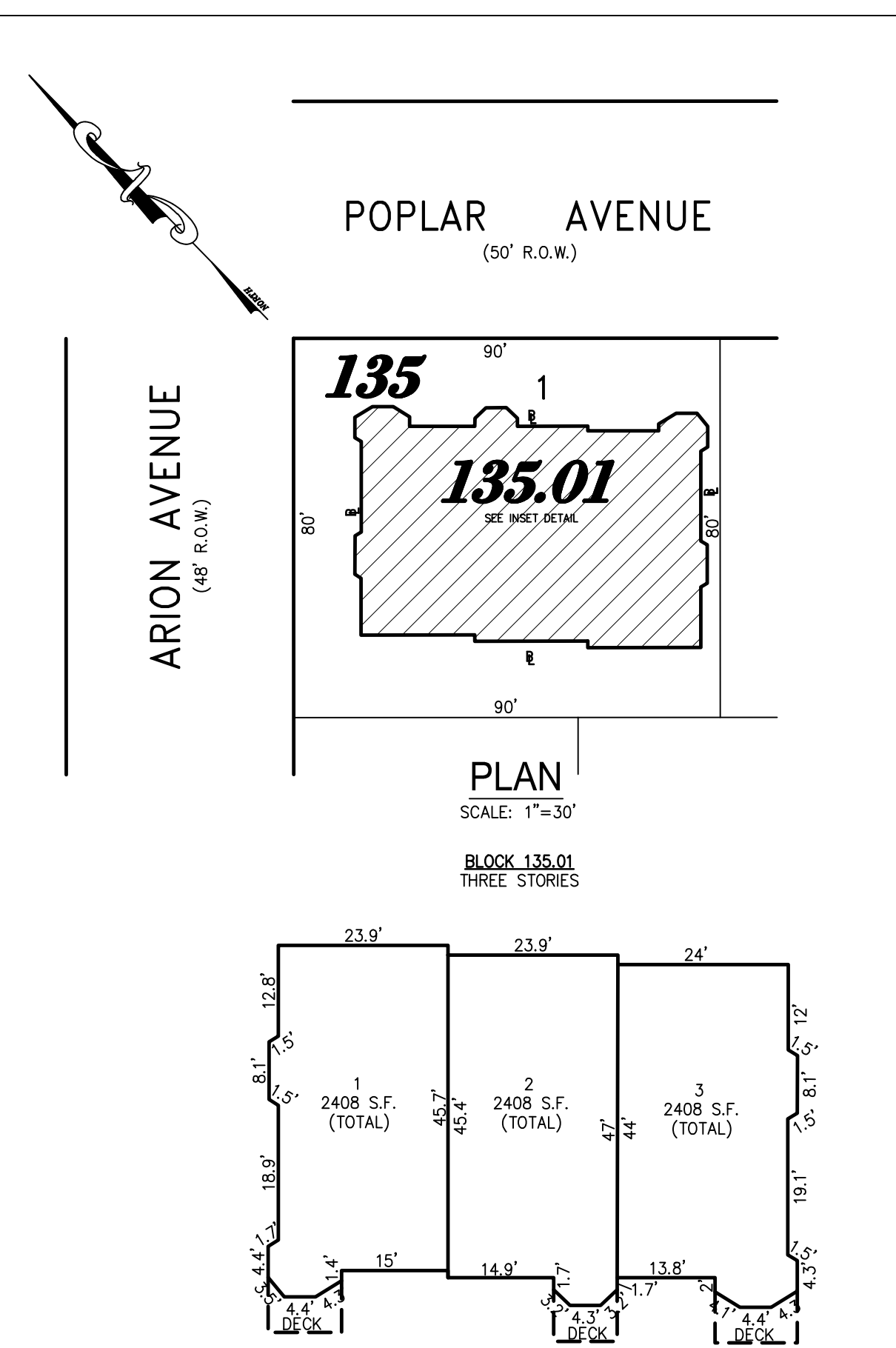


PLAN
SCALE: 1"=30'

BLOCK	LOT	UNIT SQ. FOOTAGE
132.01	1	2884 S.F.
132.01	2	1883 S.F.

DETAIL
SCALE: 1"=20'

PLATE 3
BLOCK 132, LOT 15
501-503 WEST POPLAR AVE CONDOMINIUMS
INSET "A"

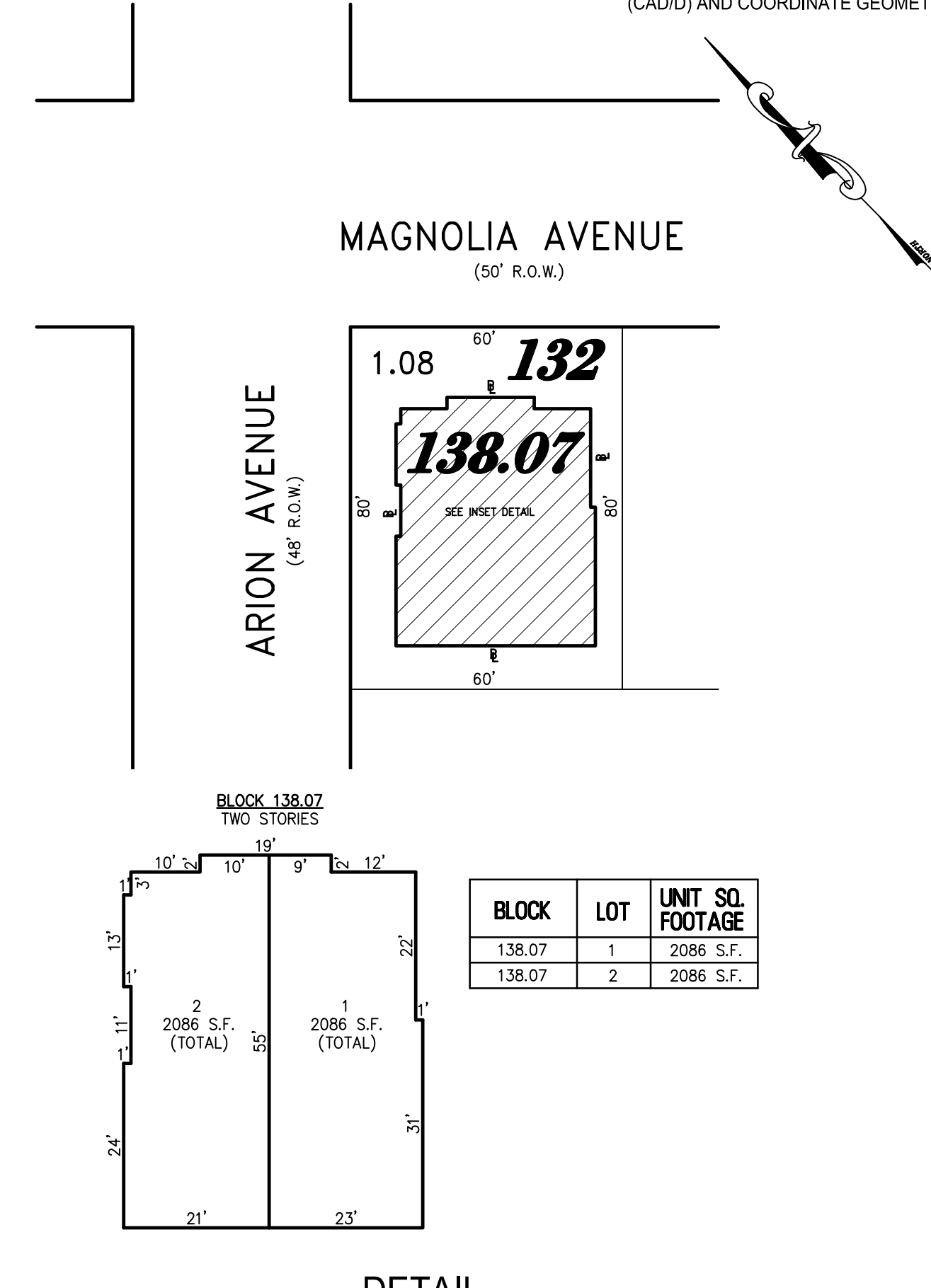


PLAN
SCALE: 1"=30'

BLOCK	LOT	UNIT SQ. FOOTAGE
135.01	1	2408 S.F.
135.01	2	2408 S.F.
135.01	3	2408 S.F.

DETAIL
SCALE: 1"=20'

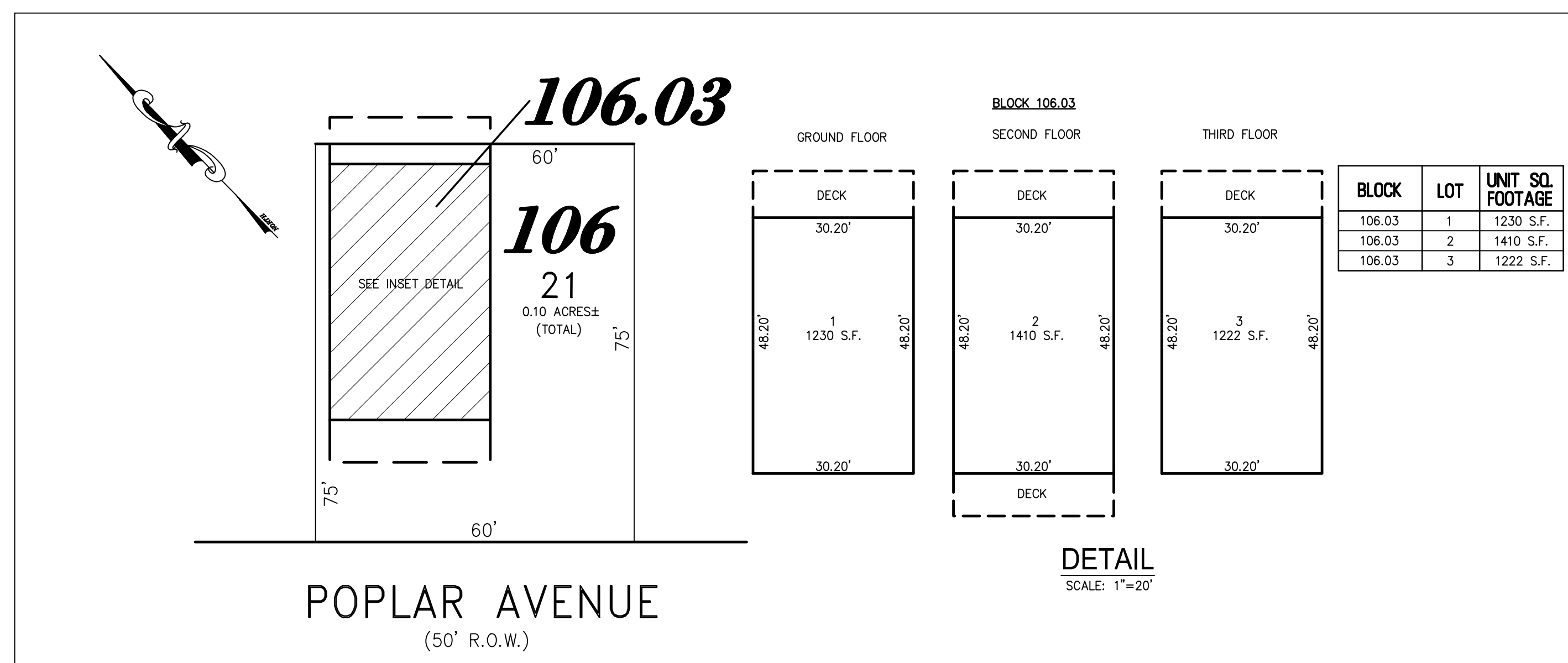
PLATE 3
BLOCK 135, LOT 1
540 WEST POPLAR AVE CONDOMINIUMS
INSET "B"



DETAIL
SCALE: 1"=20'

PLATE 3
BLOCK 132, LOT 1.08
562-564 W. MAGNOLIA CONDOMINIUM
INSET "D"

BLOCK	LOT	UNIT SQ. FOOTAGE
138.07	1	2086 S.F.
138.07	2	2086 S.F.

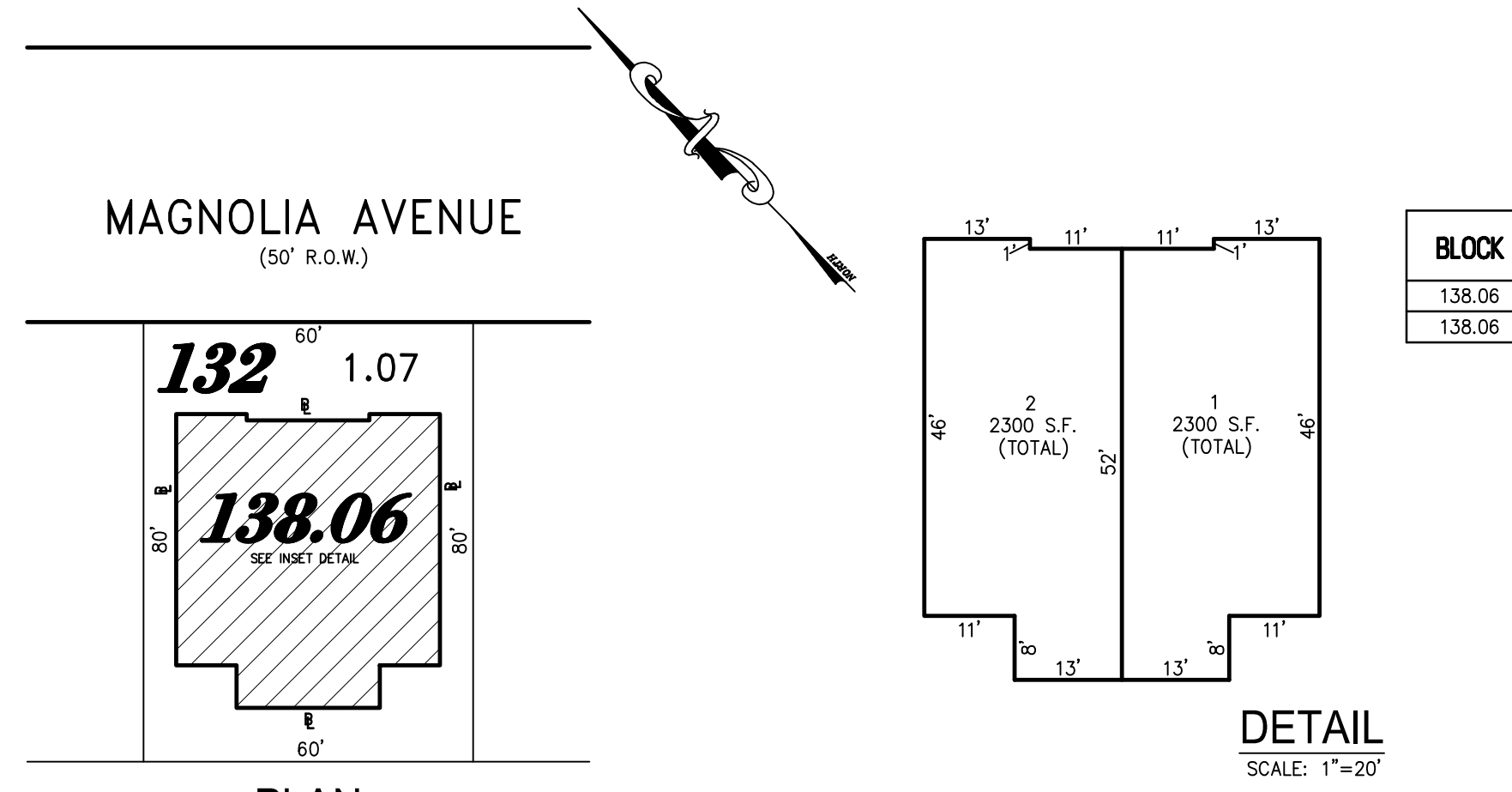


PLAN
SCALE: 1"=20'

BLOCK	LOT	UNIT SQ. FOOTAGE
106.03	1	1230 S.F.
106.03	2	1410 S.F.
106.03	3	1222 S.F.

DETAIL
SCALE: 1"=20'

PLATE 3
BLOCK 106, LOT 21
BAY BREEZE CONDOMINIUM
INSET "C"



PLAN
SCALE: 1"=30'

DETAIL
SCALE: 1"=20'

PLATE 3
BLOCK 132, LOT 1.07
558-560 W. MAGNOLIA CONDOMINIUM
INSET "E"

BLOCK	LOT	UNIT SQ. FOOTAGE
138.06	1	2300 S.F.
138.06	2	2300 S.F.

TAX MAP
BOROUGH OF WEST WILDWOOD
CAPE MAY COUNTY NEW JERSEY
SCALE: AS NOTED DATE: 6-30-2003
CHARLES E. ADAMSON NJ PROFESSIONAL LAND SURVEYOR LIC. NO. 42627
24 GA 28048700
RV **W** REMINGTON, VERNICK & WALBERG ENGINEERS
4907 NEW JERSEY AVENUE, WILDWOOD CITY, N.J. 08260
(609) 522-5150, FAX (609) 522-5313
WEB SITE ADDRESS: WWW.RVE.COM
TO SHOW CONDITIONS AS OF 12-2-2011