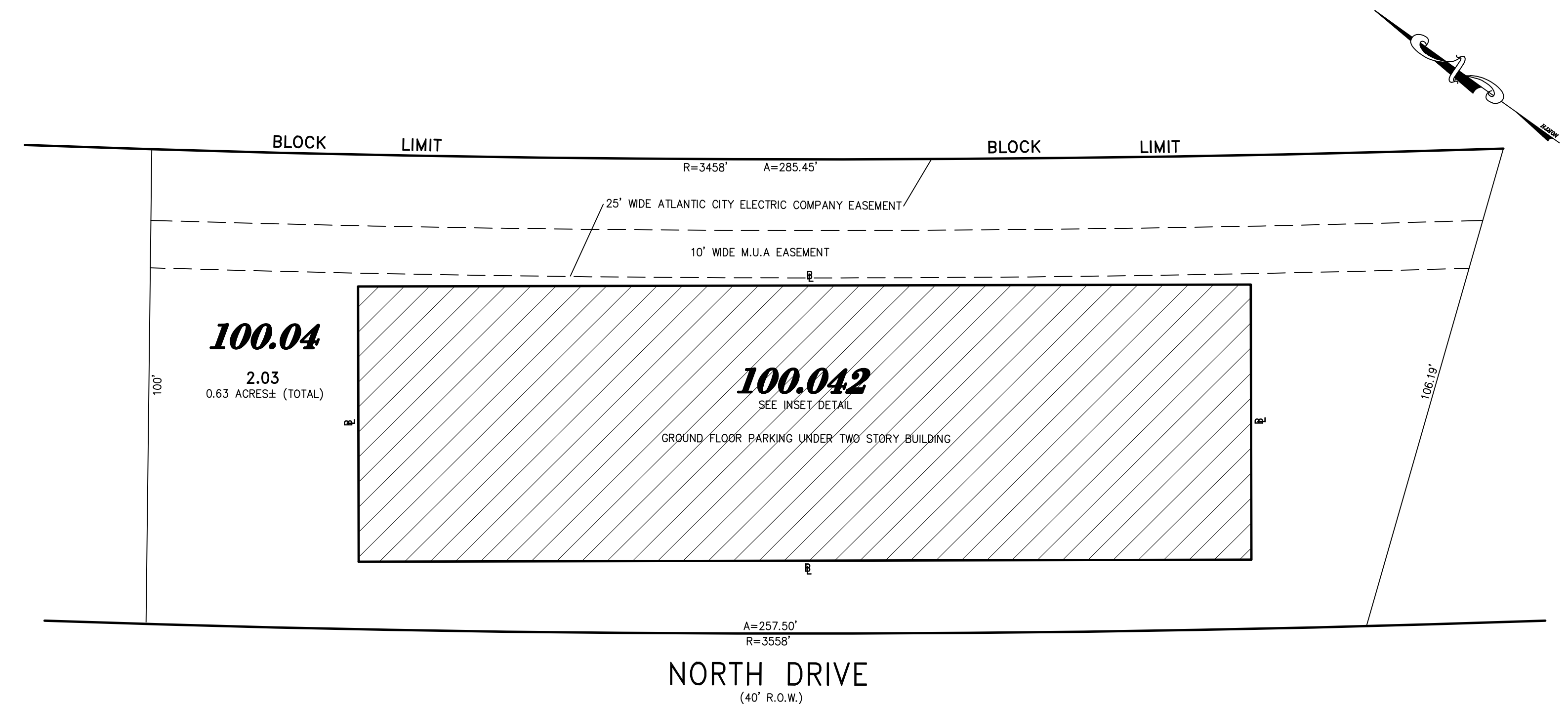


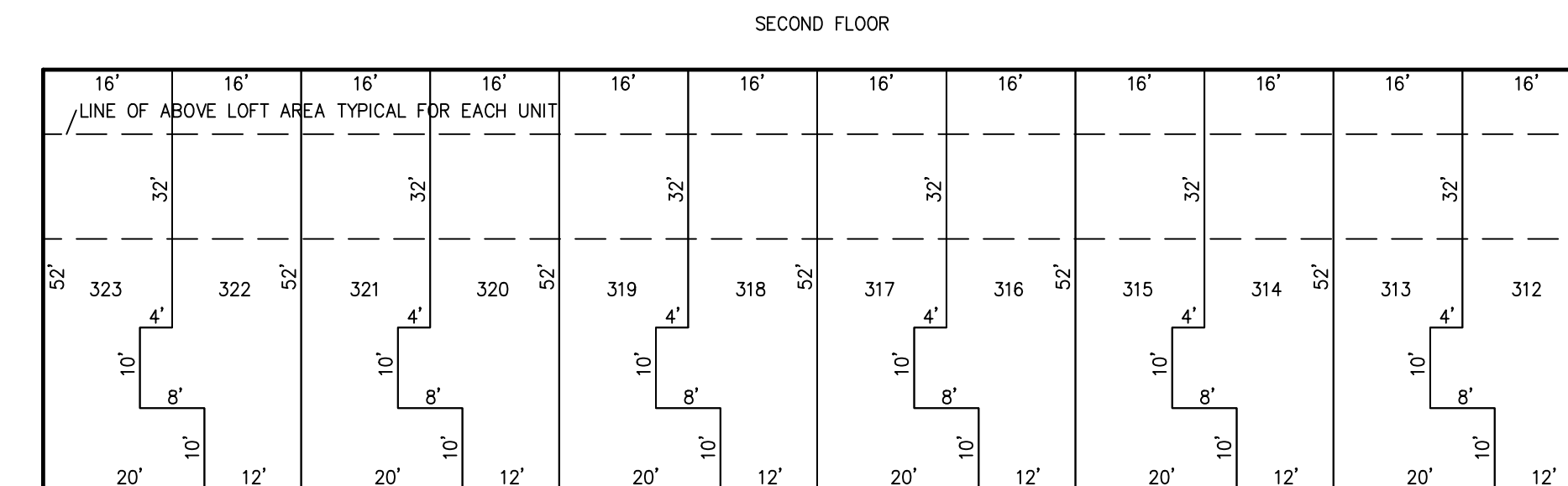
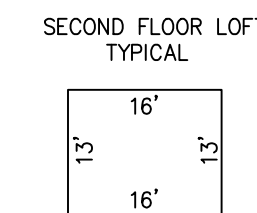
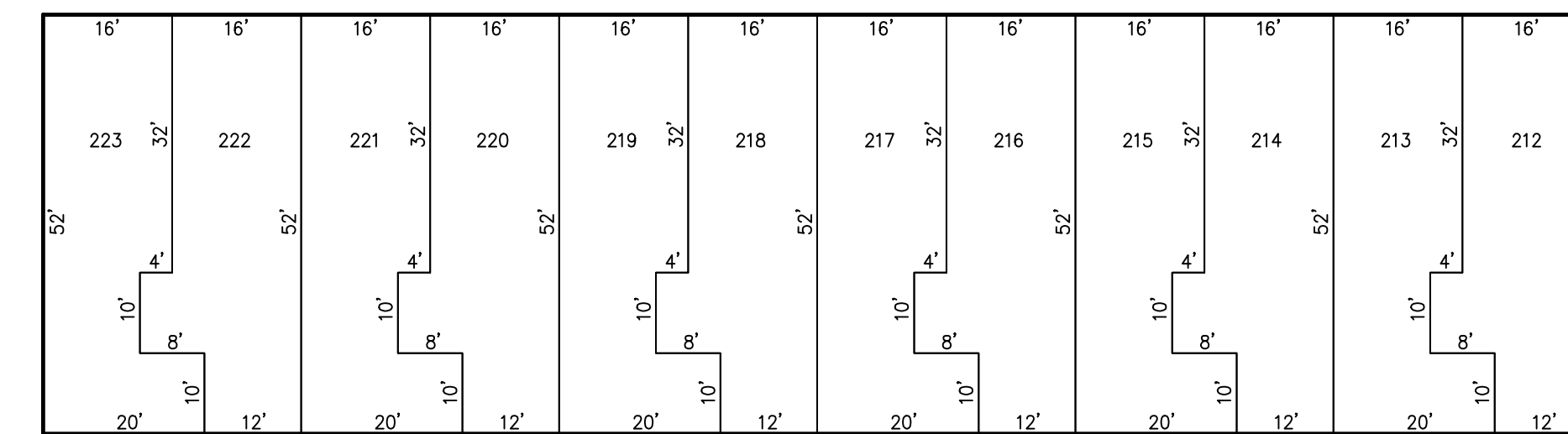
REVISIONS		
DATE	NAME	NO.

NOTE:
 THIS SHEET HAS BEEN DRAWN USING COMPUTER AIDED DRAFTING/DESIGN (CAD/D) AND COORDINATE GEOMETRY (COGO).



PLAN
 SCALE: 1"=20'

BLOCK 100.042
 TWO STORY BUILDING OVER GROUND FLOOR PARKING



DETAIL
 SCALE: 1"=20'

BLOCK	LOT	UNIT	SQ. FOOTAGE
100.042	212	832	S.F.
100.042	213	832	S.F.
100.042	214	832	S.F.
100.042	215	832	S.F.
100.042	216	832	S.F.
100.042	217	832	S.F.
100.042	218	832	S.F.
100.042	219	832	S.F.
100.042	220	832	S.F.
100.042	221	832	S.F.
100.042	222	832	S.F.
100.042	223	832	S.F.
100.042	312	1040	S.F.
100.042	313	1040	S.F.
100.042	314	1040	S.F.
100.042	315	1040	S.F.
100.042	316	1040	S.F.
100.042	317	1040	S.F.
100.042	318	1040	S.F.
100.042	319	1040	S.F.
100.042	320	1040	S.F.
100.042	321	1040	S.F.
100.042	322	1040	S.F.
100.042	323	1040	S.F.

PLATE 5
BLOCK 100.04, LOT 2.03
HOLY BAY MEADOWS CONDOMINIUM
 INSET "A"

TAX MAP
BOROUGH OF WEST WILDWOOD
 CAPE MAY COUNTY NEW JERSEY
 SCALE: AS NOTED DATE: 6-30-2003
 CHARLES E. ADAMSON NJ PROFESSIONAL LAND SURVEYOR LIC. NO. 42627
 24 GA 28048700
 REMINGTON, VERNICK & WALBERG ENGINEERS
 4907 NEW JERSEY AVENUE, WILDWOOD CITY, N.J. 08260
 (609) 522-5150, FAX (609) 522-5313
 WEB SITE ADDRESS: WWW.RVE.COM
 TO SHOW CONDITIONS AS OF 12-2-2021