

REVISIONS		
DATE	NAME	NO.

NOTE:
THIS SHEET HAS BEEN DRAWN USING COMPUTER AIDED DRAFTING/DESIGN (CAD/D) AND COORDINATE GEOMETRY (COGO).

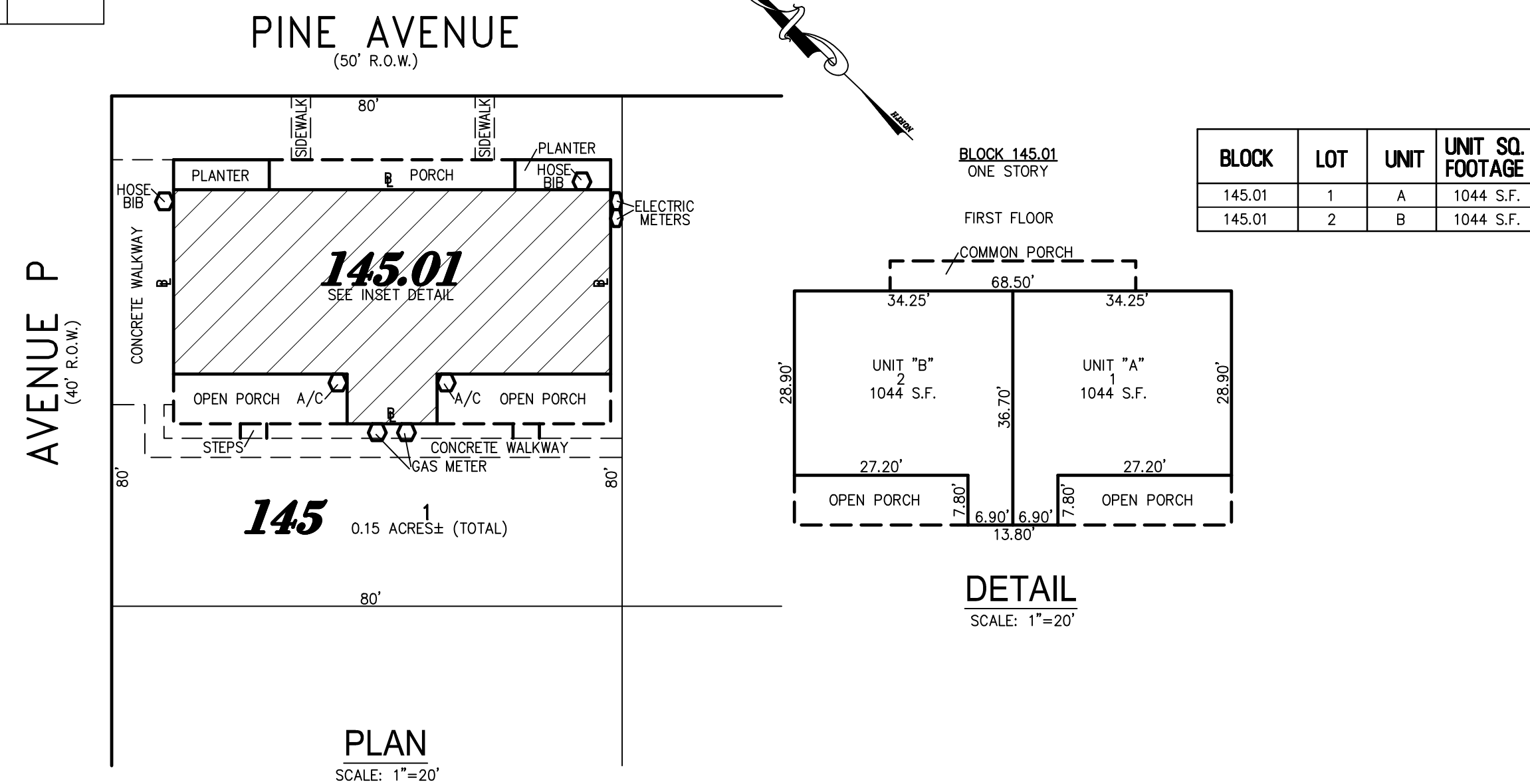


PLATE 6
BLOCK 145, LOT 1
614 WEST PINE AVENUE CONDOMINIUM
INSET "A"

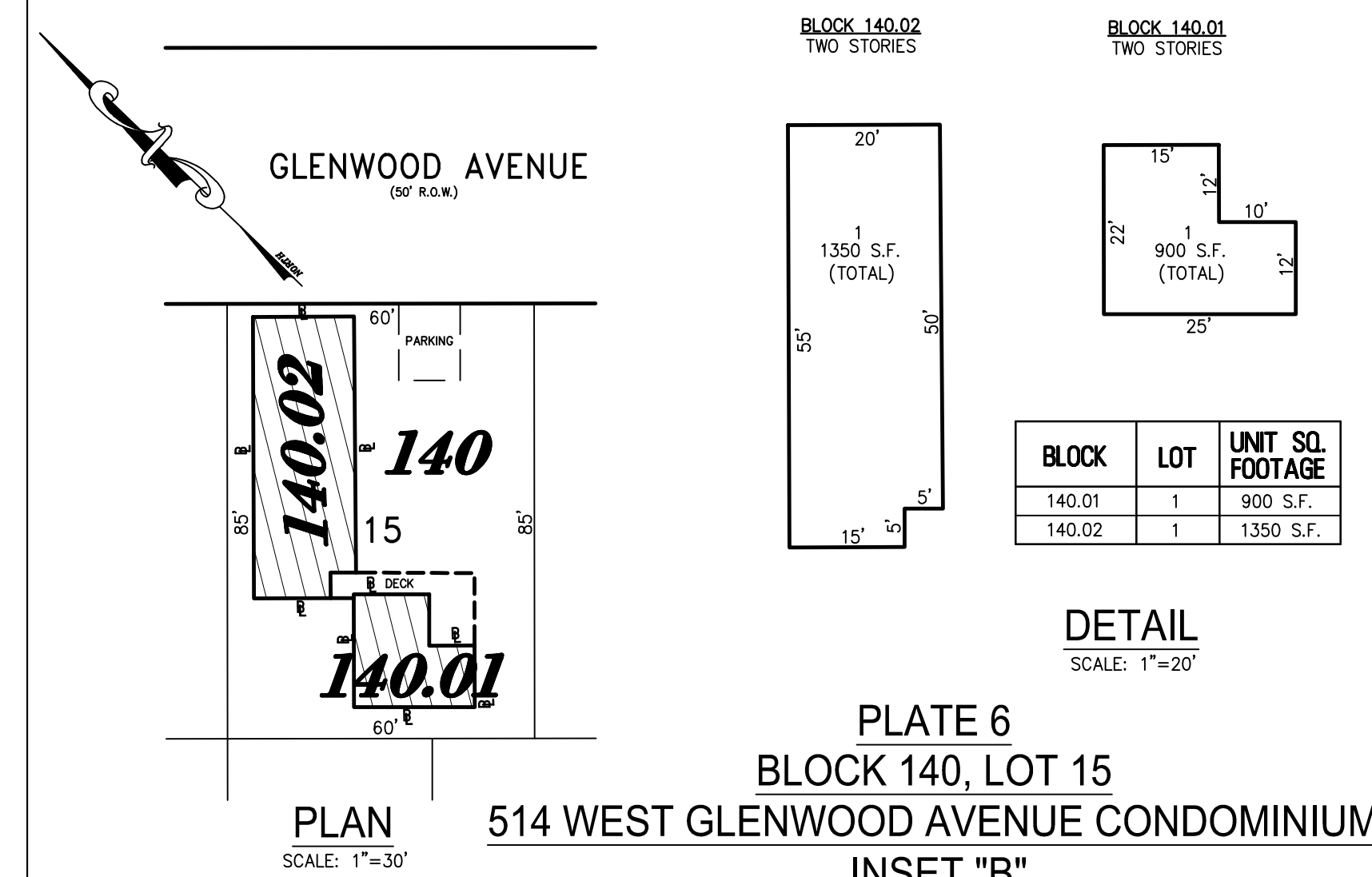
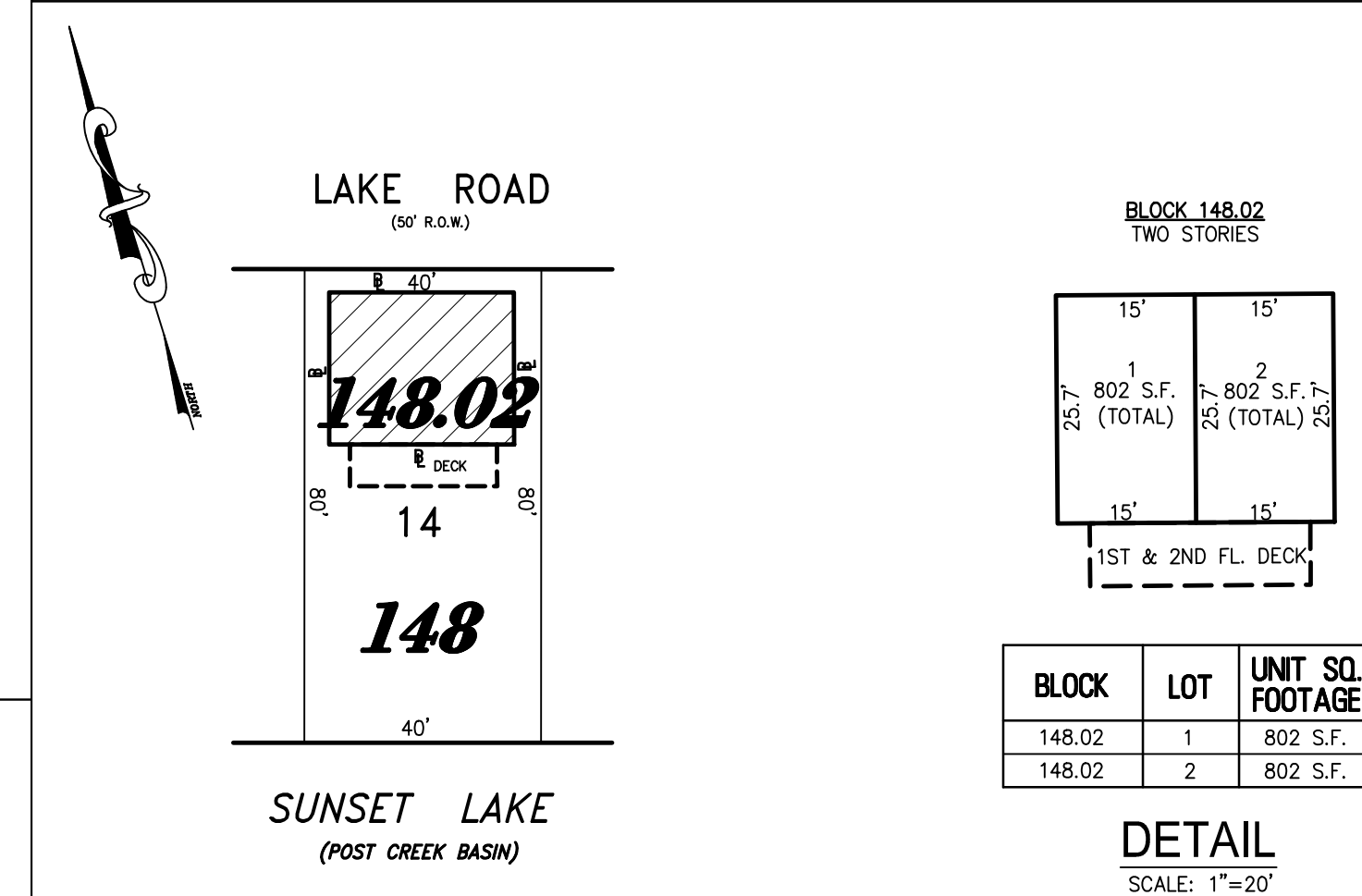
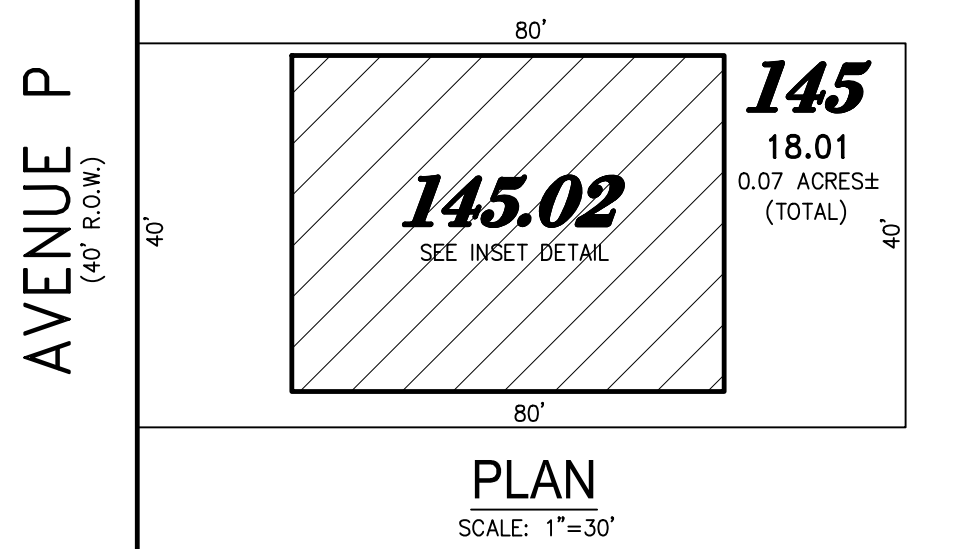


PLATE 6
BLOCK 140, LOT 15
514 WEST GLENWOOD AVENUE CONDOMINIUM
INSET "B"



SUNSET LAKE
(POST CREEK BASIN)
PLATE 6
BLOCK 148, LOT 14
20 LAKE ROAD CONDOMINIUM
INSET "C"



BLOCK	LOT	UNIT	UNIT SQ. FOOTAGE
145.02	1	A	1312 S.F.
145.02	2	B	1312 S.F.

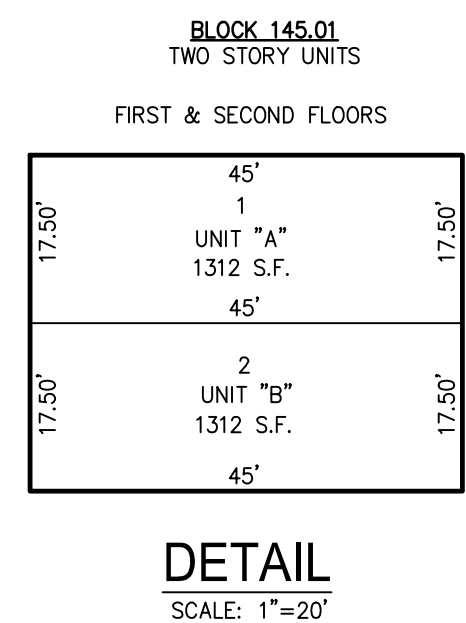


PLATE 6
BLOCK 145, LOT 18.01
203 AVENUE P CONDOMINIUM
INSET "F"

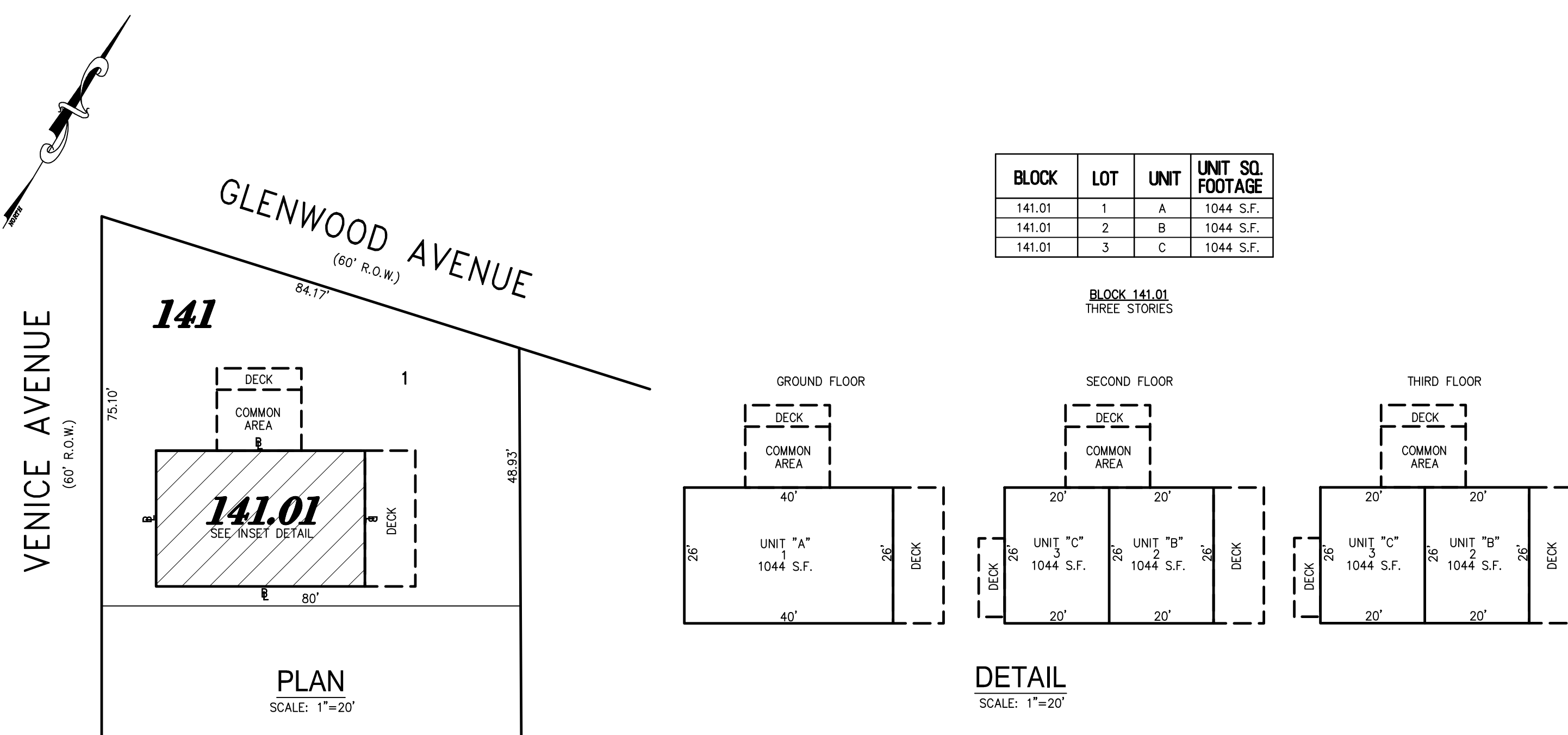


PLATE 6
BLOCK 141, LOT 1
7 VENICE AVENUE CONDOMINIUM
INSET "D"

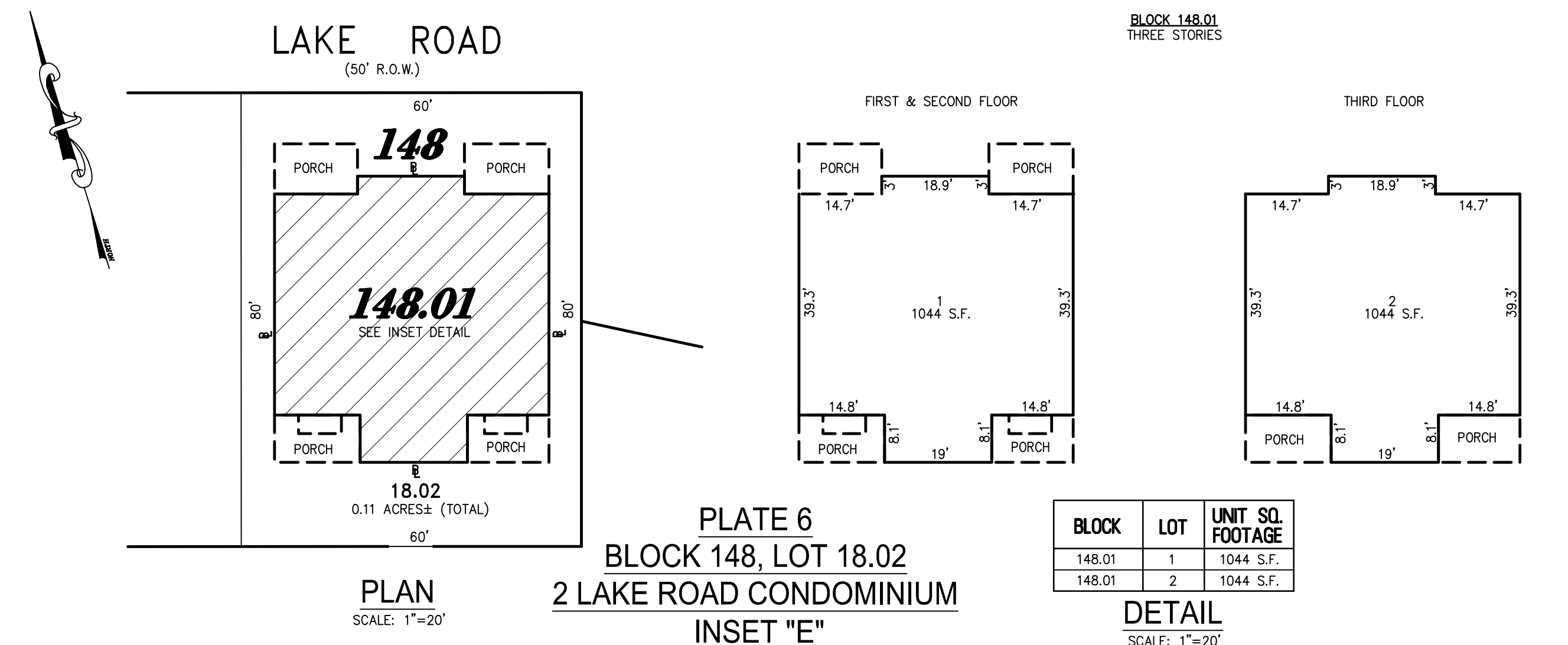


PLATE 6
BLOCK 148, LOT 18.02
2 LAKE ROAD CONDOMINIUM
INSET "E"

BLOCK	LOT	UNIT SQ. FOOTAGE
148.01	1	1044 S.F.
148.01	2	1044 S.F.

DETAIL
SCALE: 1"=20'

TAX MAP
BOROUGH OF WEST WILDWOOD
CAPE MAY COUNTY NEW JERSEY
SCALE: AS NOTED DATE: 6-30-2005
CHARLES E. ADAMSON NJ PROFESSIONAL LAND SURVEYOR LIC. NO. 42627
24 GA 28048700
RVW REMINGTON, VERNICK & WALBERG ENGINEERS
4907 NEW JERSEY AVENUE, WILDWOOD CITY, N.J. 08260
(609) 522-5150, FAX (609) 522-5313
WEB SITE ADDRESS: WWW.RVE.COM
TO SHOW CONDITIONS AS OF 12-2-2021