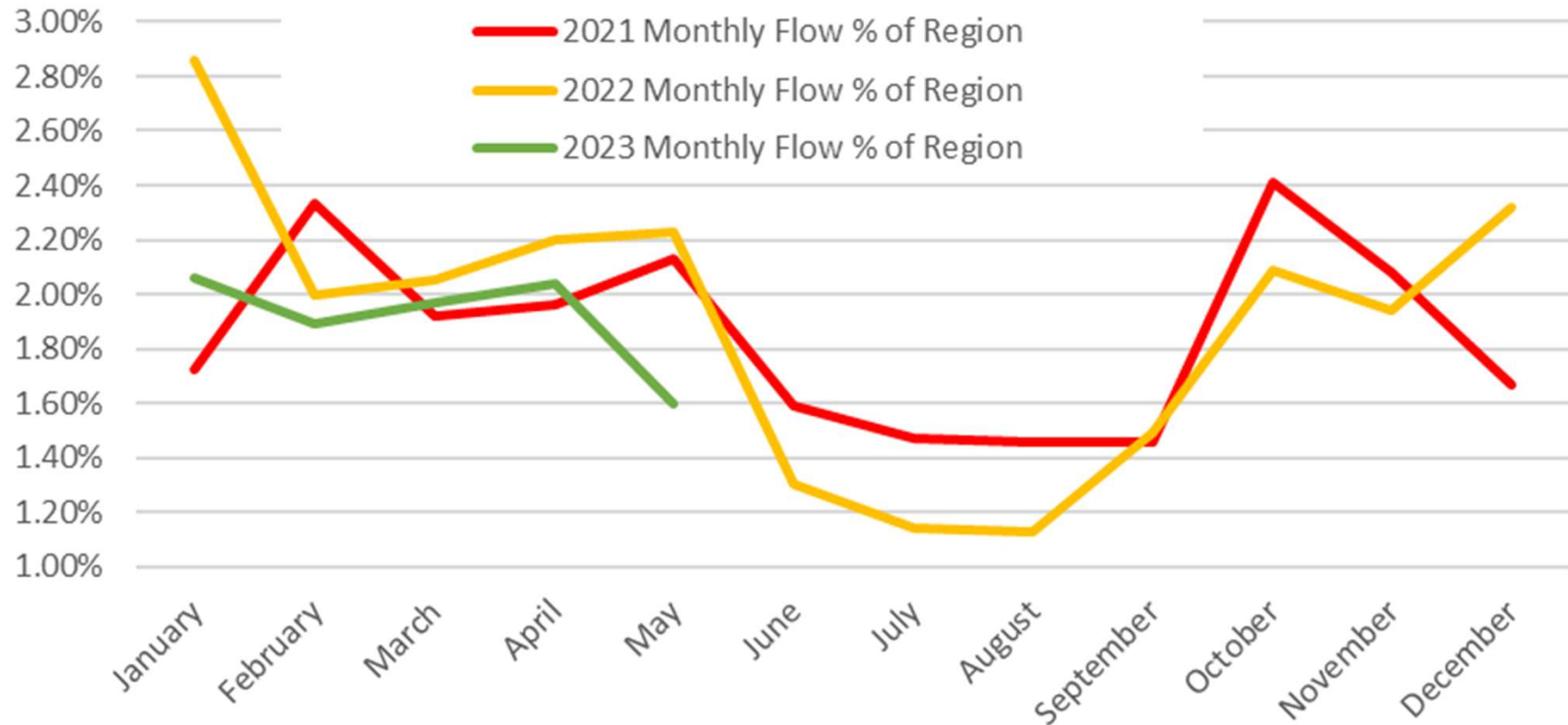
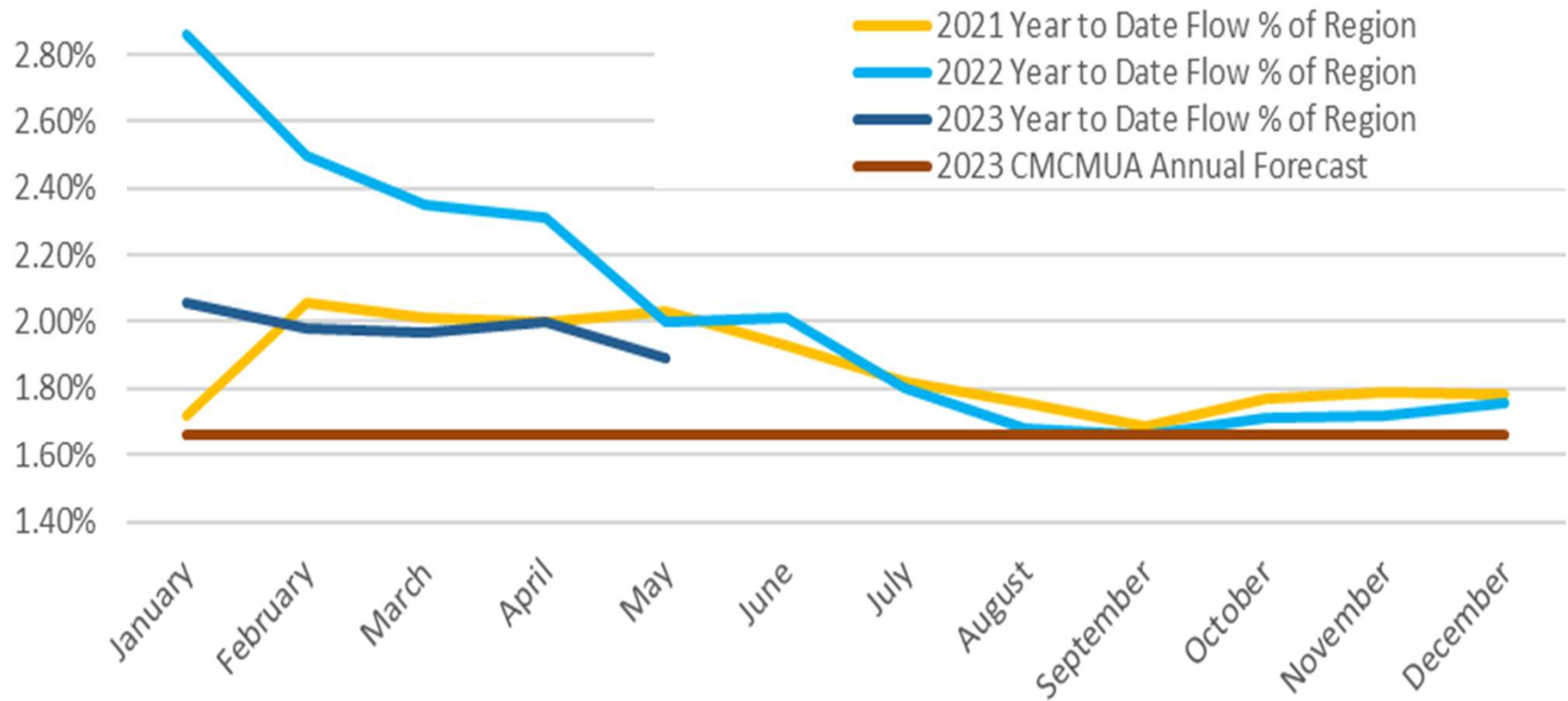


Figure 1: Percentage of Monthly Flow Comparison



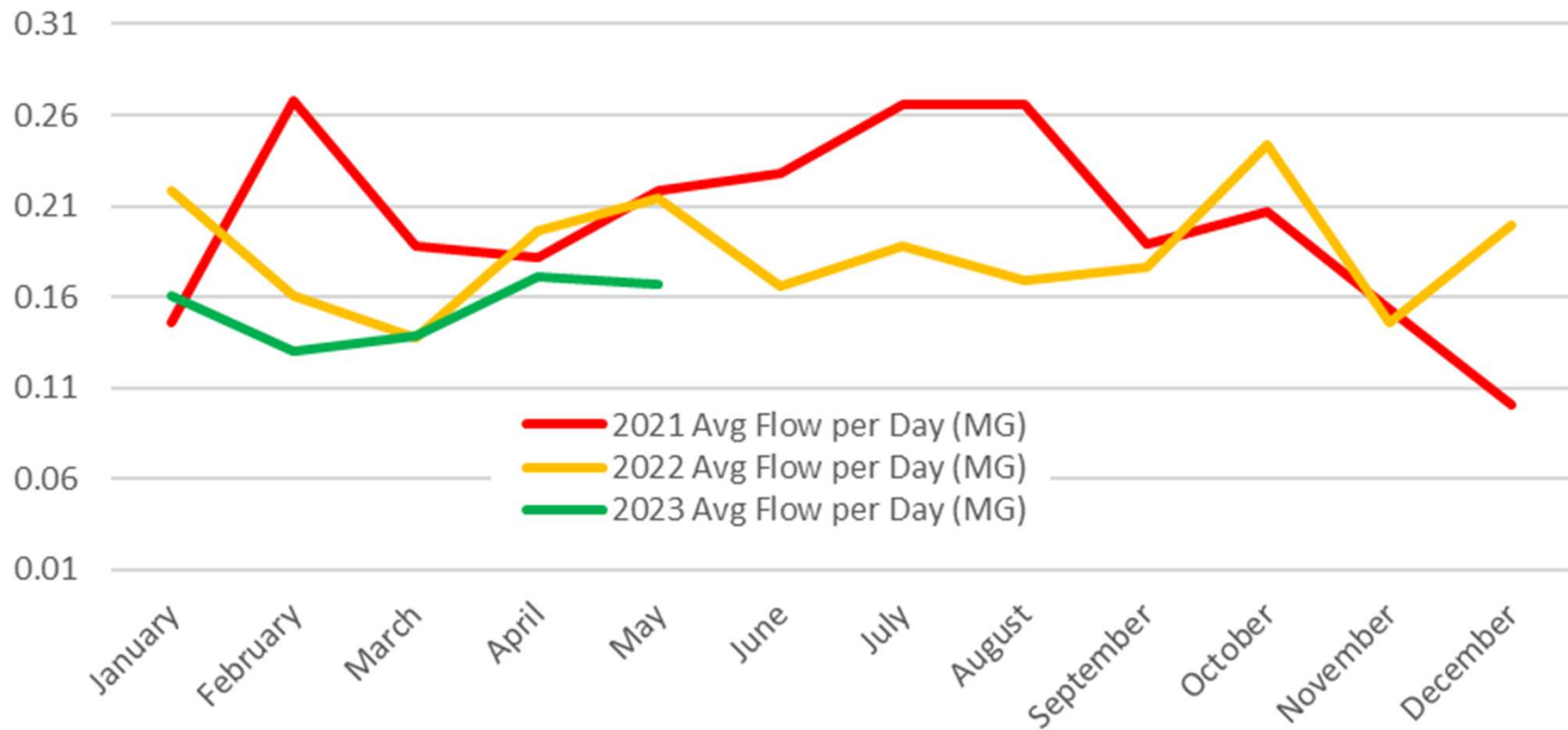
Monthly flow percentages typically drop since the West Wildwood infiltration dominates our flow and other towns flows are dominated by their usage. The good news is the summer flows are a significant driver in annual CMCMUA cost.

Figure 2: Total Flow % Comparison



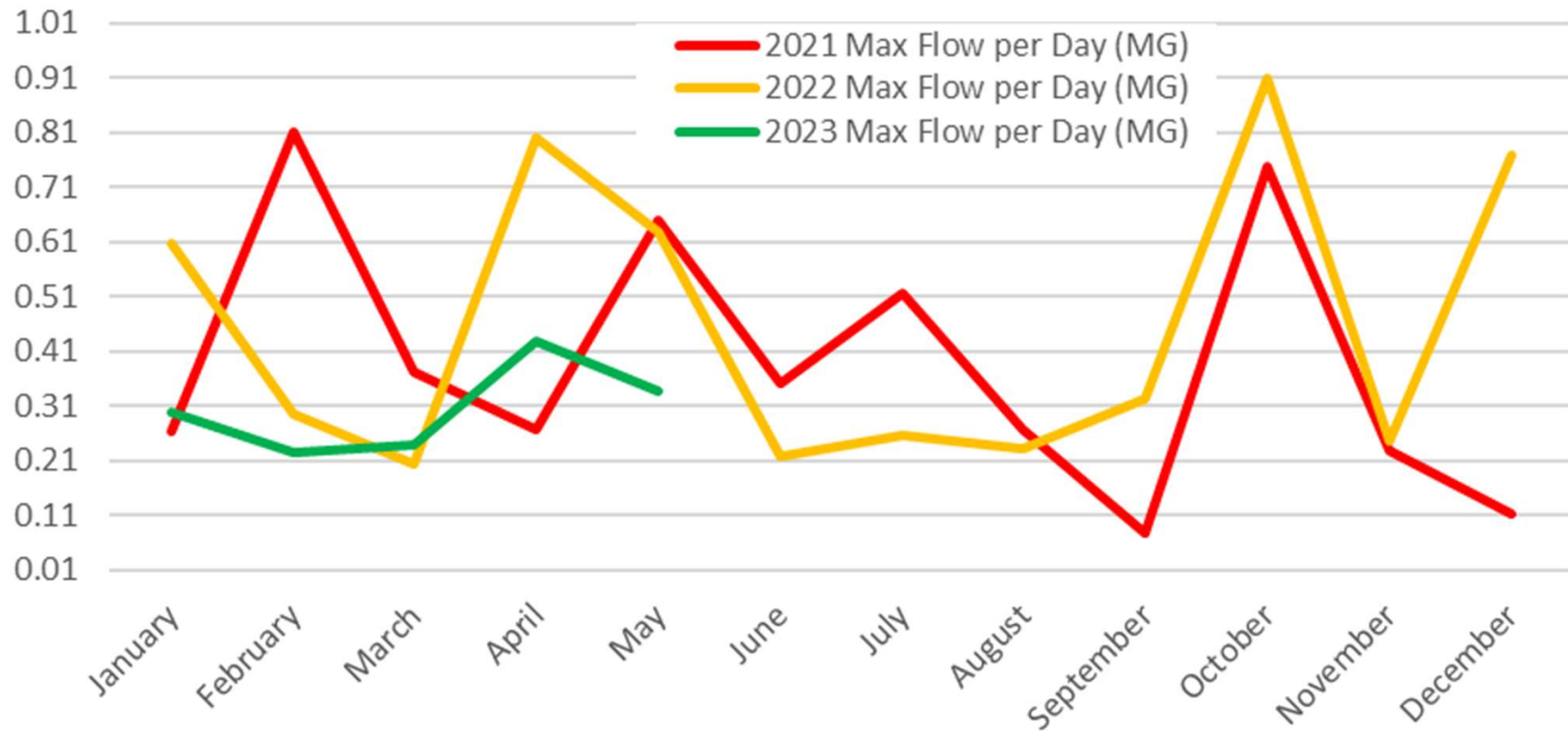
Total flow percentages are continuing to trend lower. The CMCMUA forecast for 2023 is 1.66%. If we trend similar to 2022 we could be below the forecast resulting in CMCMUA credit next year.

Figure 3: Monthly Average Flow Comparison



Monthly average flows are reduced from prior years however they are really a combination of rainfall and water infiltration.

Figure 4: Monthly Peak Flow Comparison



Max flows continue to show significant improvement from prior years however, there are still significant repairs needed.

SON SOUND

SEWER PERMIT
No. 96-0644-4

UTILITY MAP
EXISTING SANITARY SEWER SERVICE AREA
WEST WILDWOOD BOROUGH
CAPE MAY COUNTY, NEW JERSEY

SCALE: 1" = 500' DATE: SEPT. 19, 2019

WEST WILDWOOD BOROUGH

701 W. GLENWOOD AVENUE
WEST WILDWOOD, NEW JERSEY 08260
PH (609)552-4845 FAX (609)522-8055

DRAWN BY: SHEET . OF .
CHECKED BY:

MASTER PLAN ATTACHMENT - I

- Legend
- Future Repairs (51)
 - Full Renovation needed (3)
 - Curtain Grout Repairs (35)
 - Completed Rehabilitation (5)
 - Completed Replacement (8)

BOROUGH LIMIT
OF SEWERED AREA

SEWER PERMIT
No. 97-1277-4

BOROUGH LIMIT
OF SEWERED AREA

POST CREEK BASIN

WILDWOOD CANAL

